

Productive settlements

UPD 2011 | 2012 session

Roberto Manuelli and Gianfranco Orsenigo

Politecnico di Milano 21th may 2012





Brianza



production today



Biccoca view around '20s



Bicocca area in the '80s



production yetserdav

provincia di Treviso



production today



Mariano – Giussano – Cabiato, Brianza





Monsampolo, Ascoli Piceno

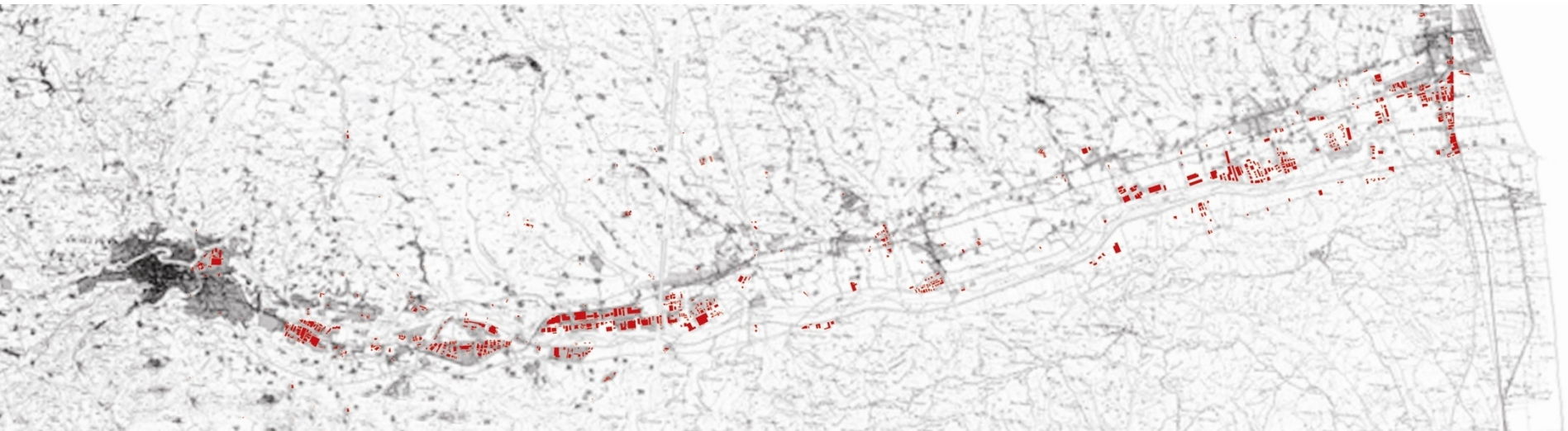




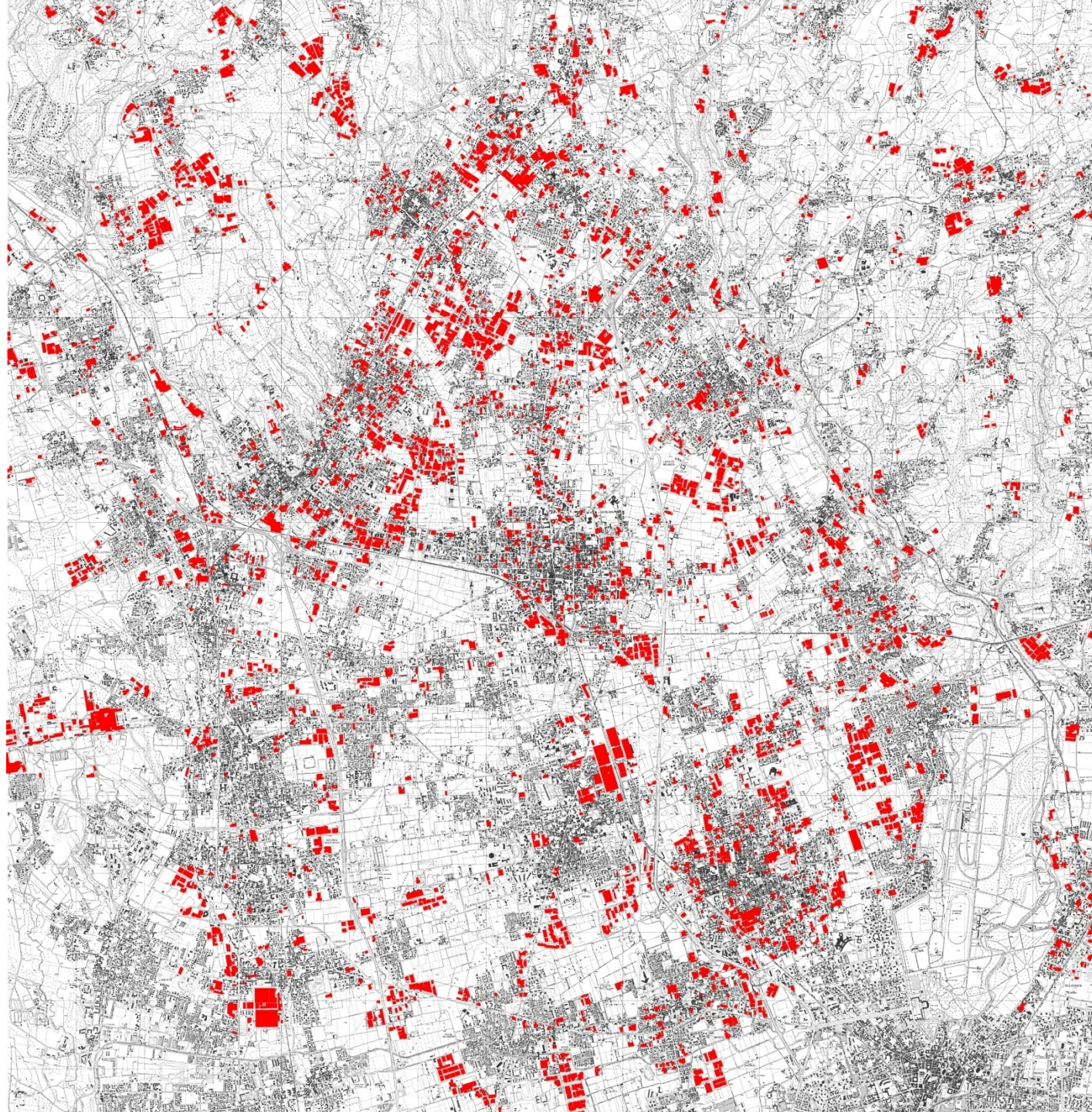
l'area veneta



pulverization



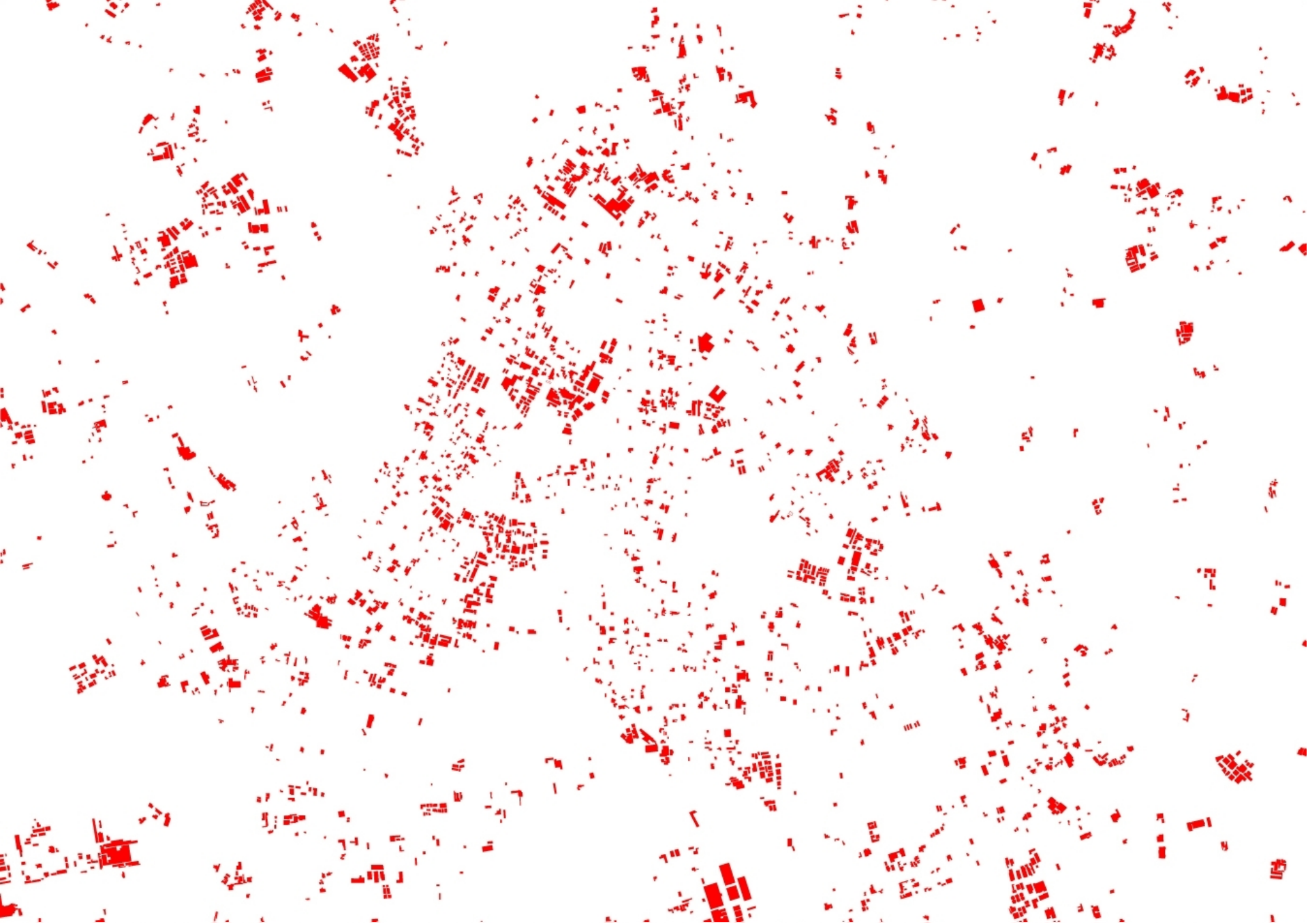
la brianza



pulverization

brianza:

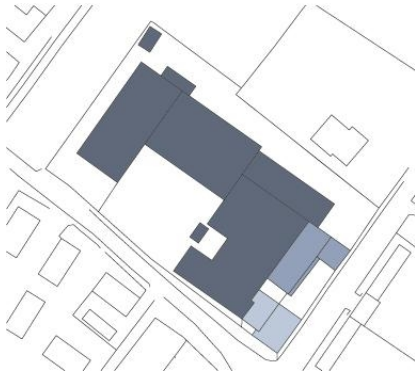
a land shaped by the production



a land shaped by the production



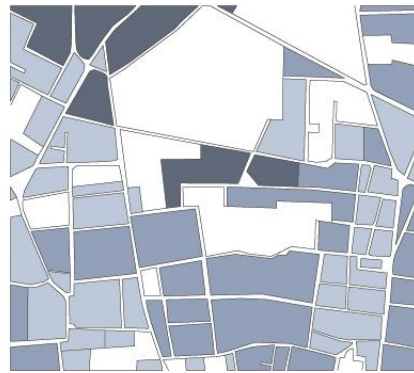
on the plot



on the block



between parts of city

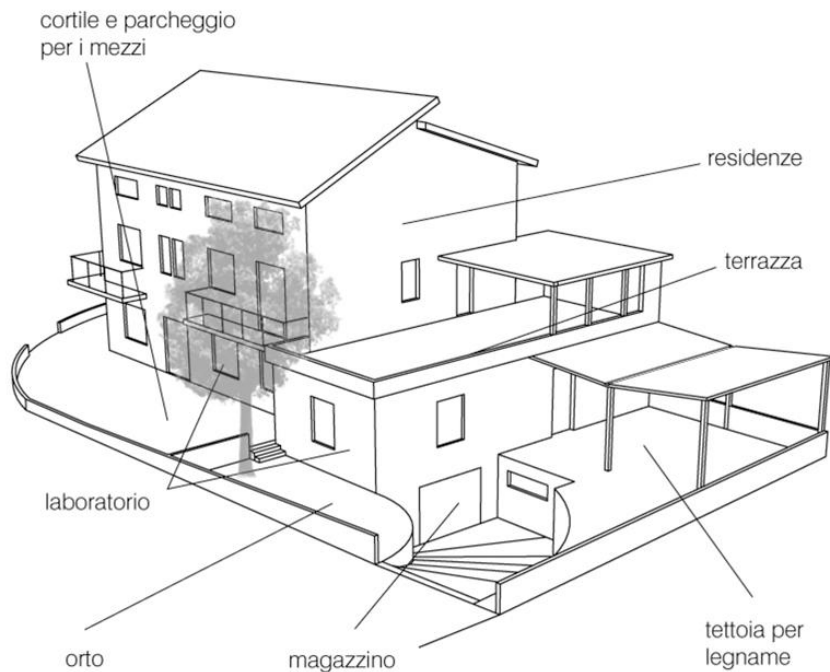


→ different scales of mixité

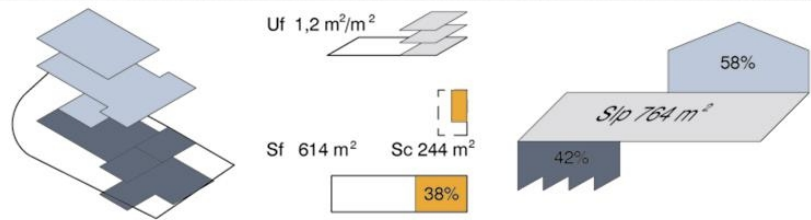
E02

CASA BOTTEGA

edificio prevalentemente residenziale che ospita attività artigianali al piano terra e seminterrato



- l'edificio, posto al centro del lotto, è stato interessato da ampliamenti nel corso degli anni; modifiche che hanno coinvolto particolarmente i locali del laboratorio
- l'ampliamento del laboratorio è stata occasione per arricchire un appartamento con un ampio terrazzo
- gran parte dello spazio aperto ha una pavimentazione dura per favorire le azioni legate all'attività artigianale; fa eccezione una piccola parte occupata da un orto

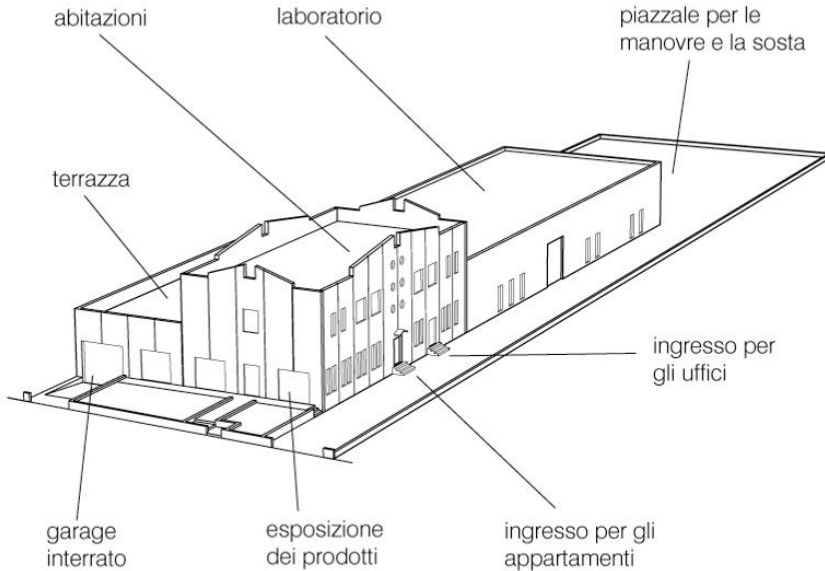


different scales of mixité

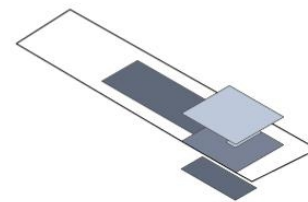
E05

CAPANNONE CASA

contenitore produttivo che ospita delle unità residenziali al primo piano



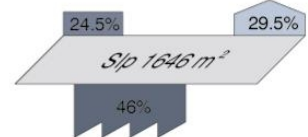
- l'edificio è composto da due contenitori prefabbricati: il primo ospita al piano terra l'esposizione e gli uffici, al livello superiore due alloggi; il secondo contenitore è prettamente produttivo
- la presenza dell'esposizione è enfatizzata dalla presenza di un piccolo giardino antistante, il resto dello spazio aperto è asfaltato
- alla residenza non è destinato uno spazio aperto, ma utilizza la copertura dell'edificio produttivo come ampio terrazzo
- i differenti usi degli spazi interni, nei prospetti, sono denunciati dalle dimensioni delle bucatore



Uf 0,7 m²/m²

Sf 2429 m² Sc 1006 m²

41%

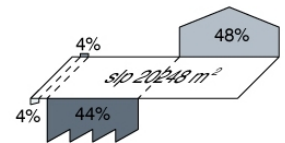
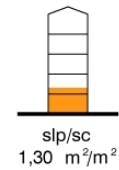
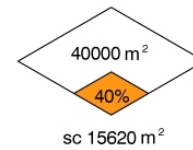
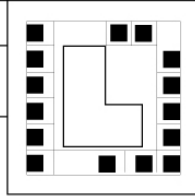


different scales of mixité

Z04

FRAMMISTIONE NELL'ISOLATO

grandi contenitori sono circondati da edilizia residenziale di dimensioni ridotte

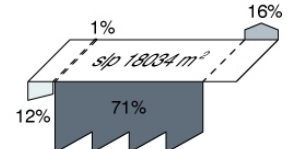
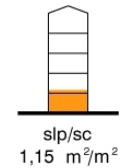
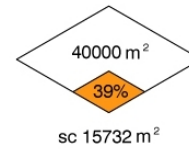
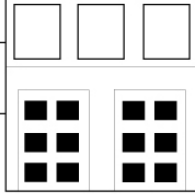


different scales of mixité

Z06

FRAMMISTIONE TRA PARTI

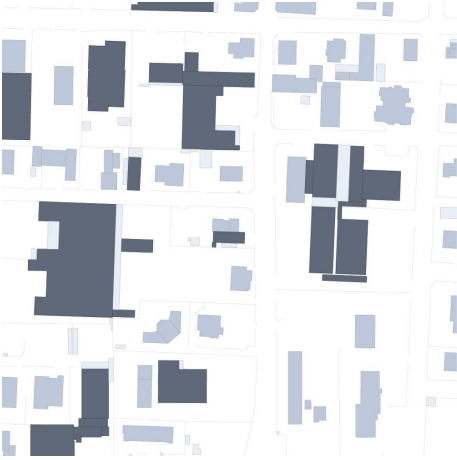
differenti aree omogenee, per funzione e dimensioni dei manufatti, si accostano



different scales of mixité



a fragmented territory



a fractal territory

this image is in crisis

the productive areas have **no longer a dominant image**
in relation to changes in production processes:

- of macro-systemic nature,
- of organizing nature
- of technological nature

"the company network can live with one slim, with the modular and the transnational"

Benedetto Vecchi, "Impresa" in
U. Fadini, A. Zanini (2001), *Lessico postfordista. Dizionario di idee della mutazione*. Feltrinelli, Milano

social changes and the request for different levels of comfort

the need to preserve the leftover of open spaces for the sustainability of the territory

architecture

landscape

infrastructure



open spaces fragmentation



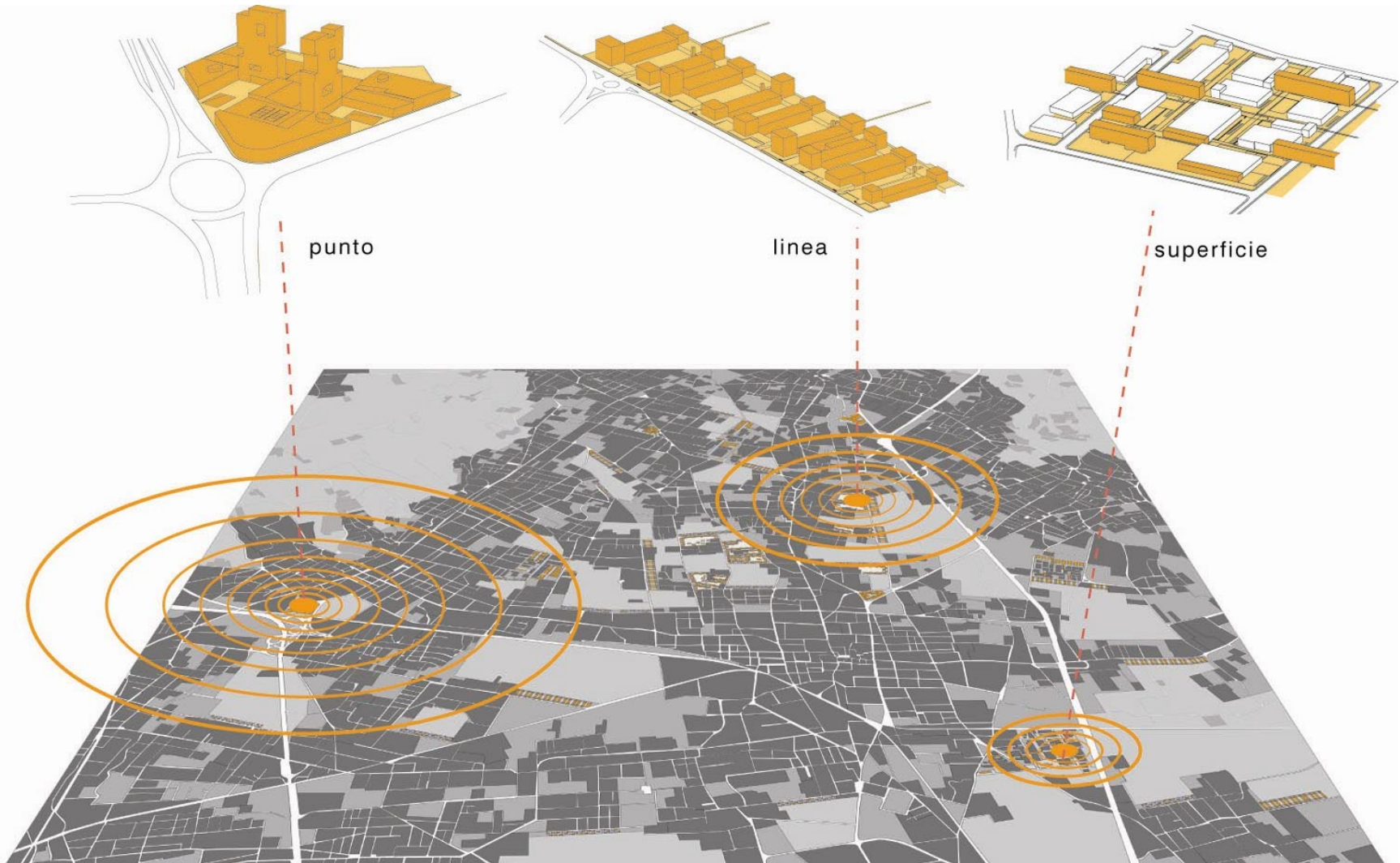
a fragmented territory



the spaces of production, a resource for the contemporary territory



DESIGN DEVICES



punto

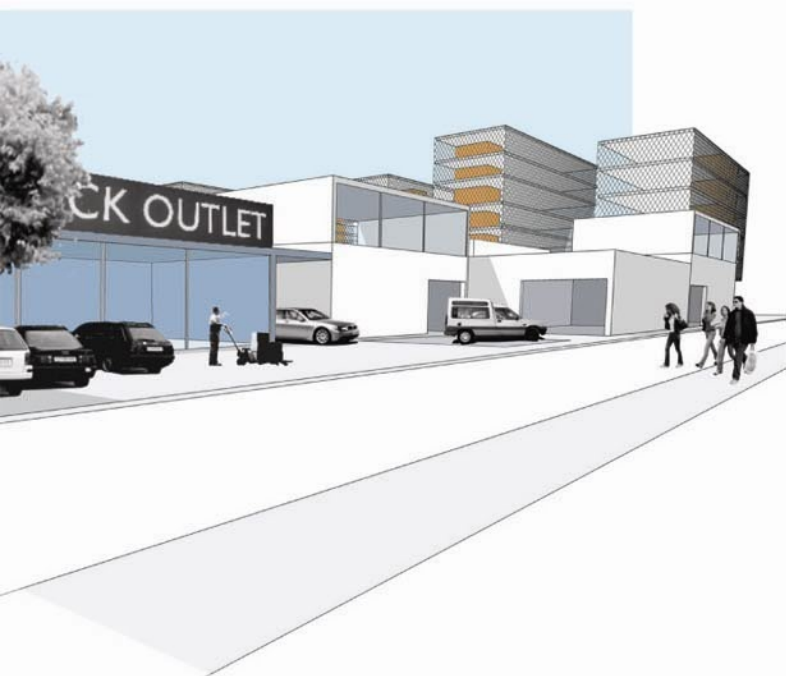
linea

superficie

the scale of the project

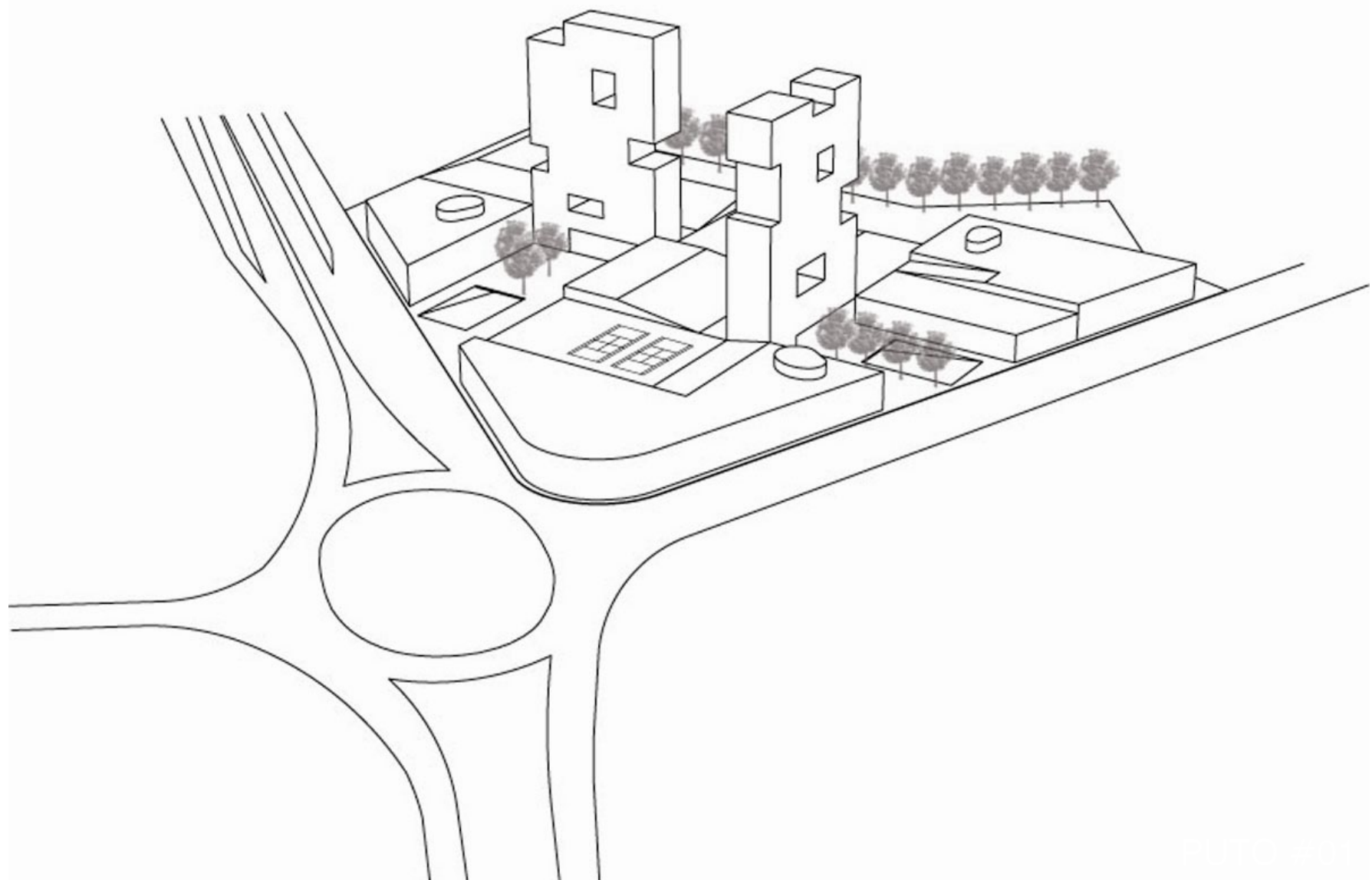


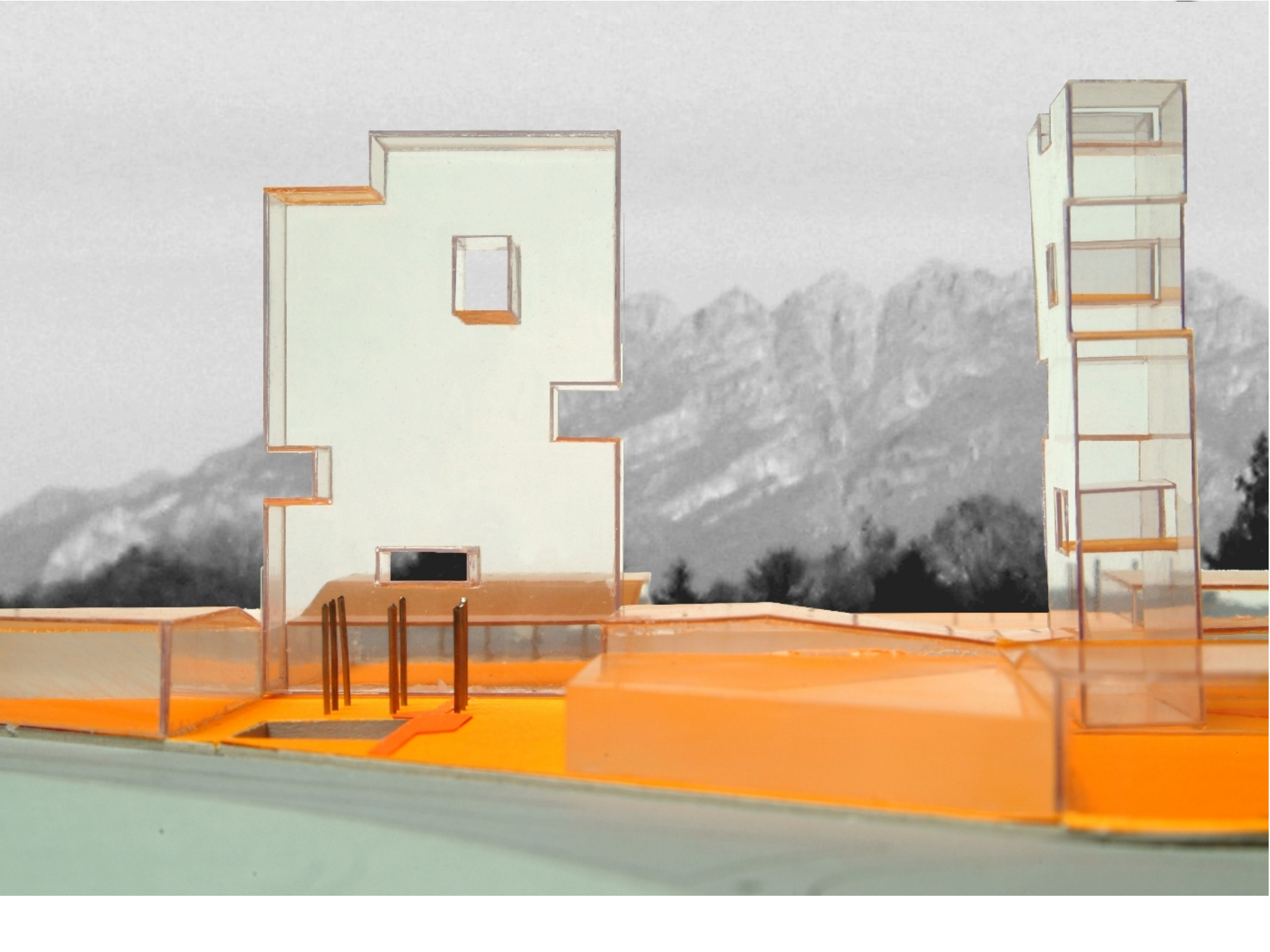
the mixité as a choice

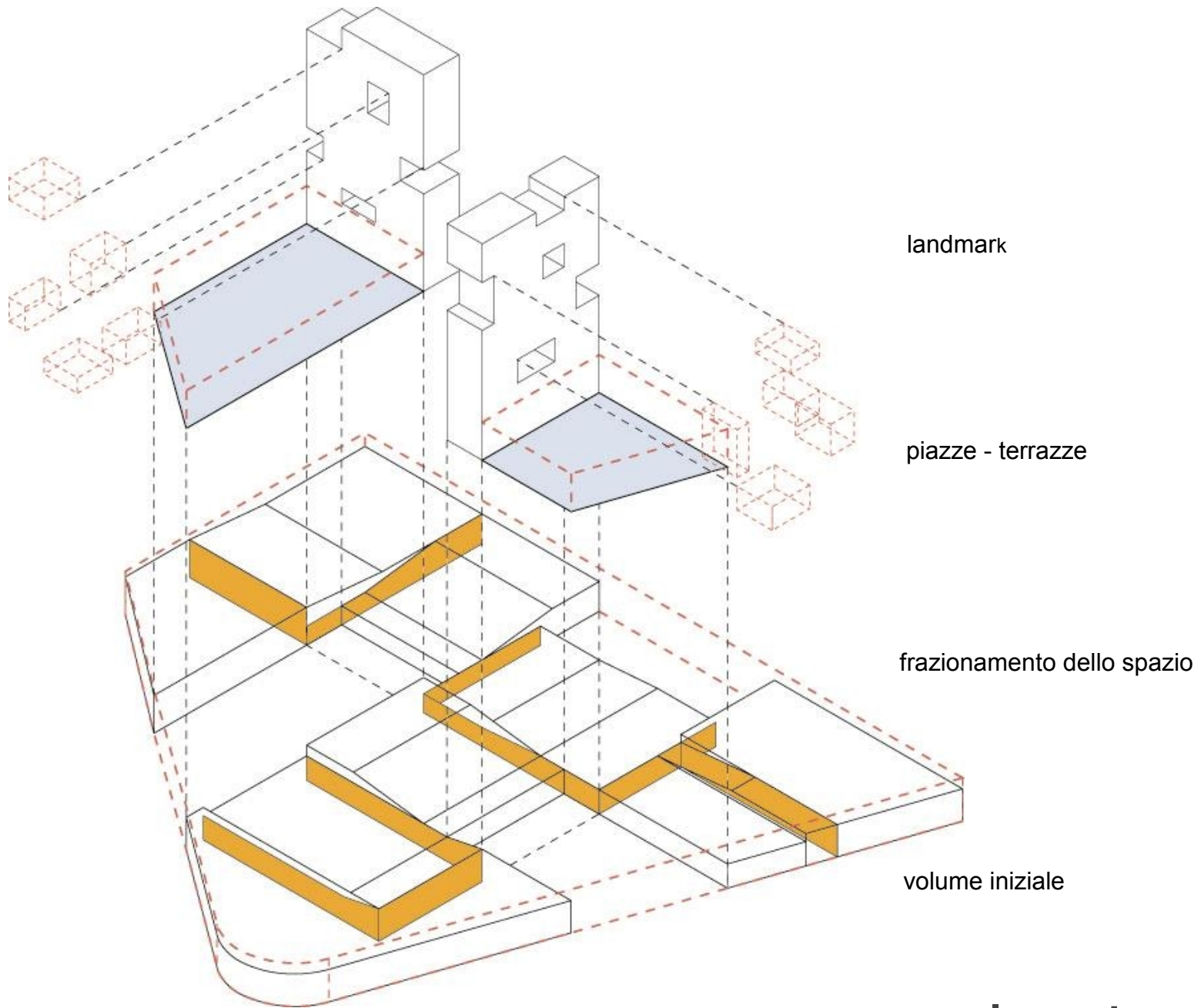


densificare condividendo lo spazio

point #01 seregno







landmark

piazze - terrazze

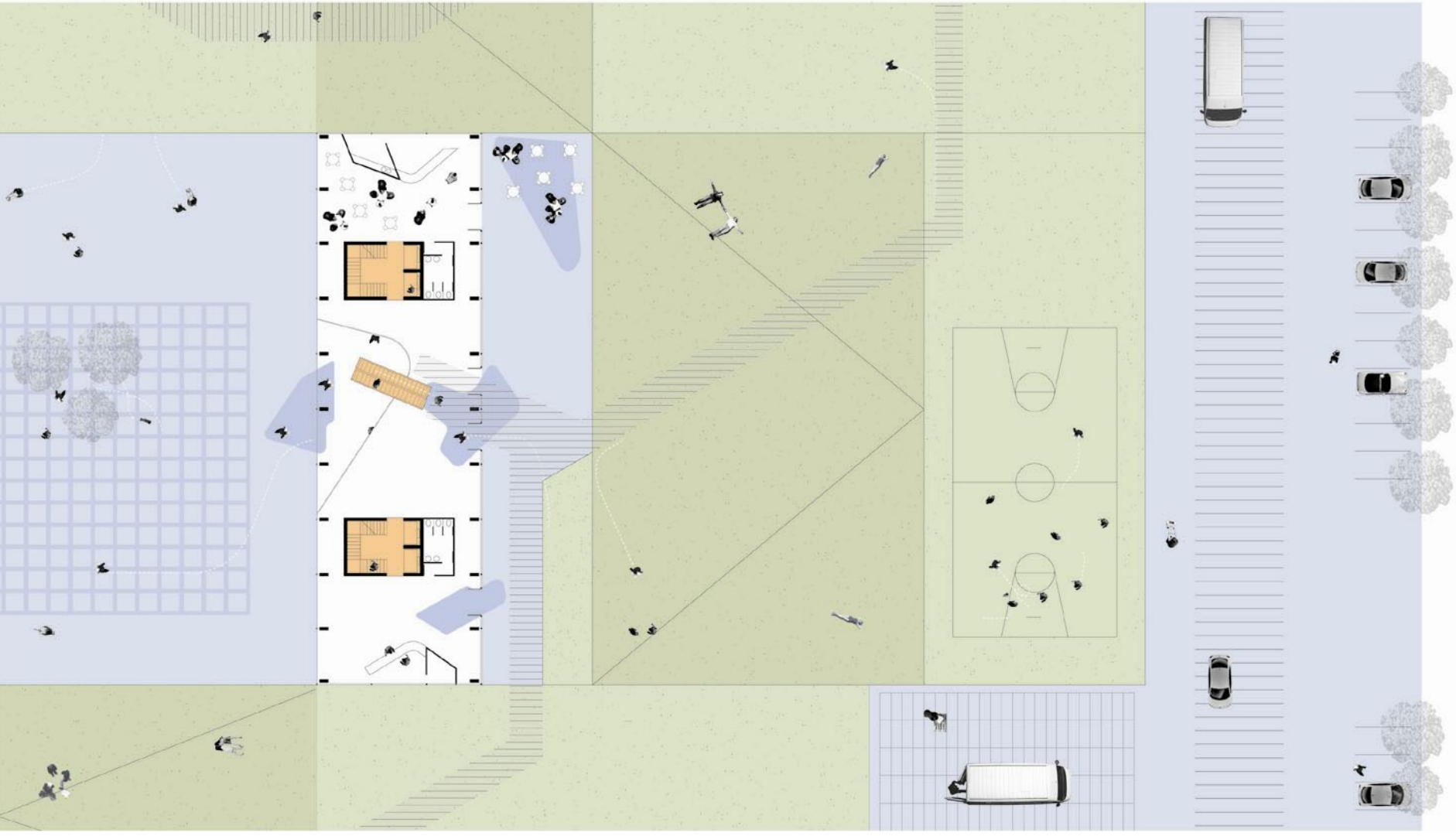
frazionamento dello spazio

volume iniziale

elements and rules

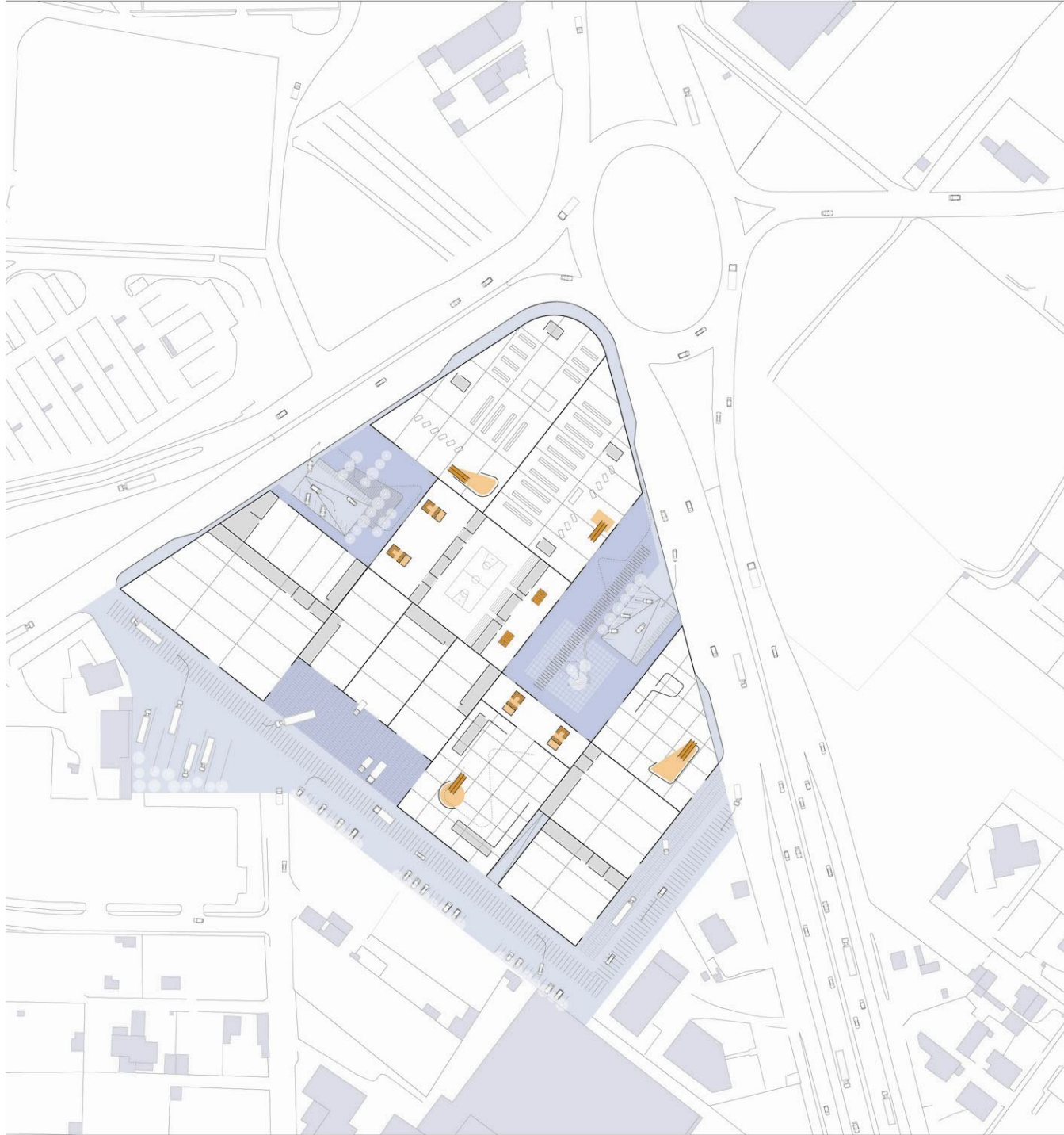


on the roof

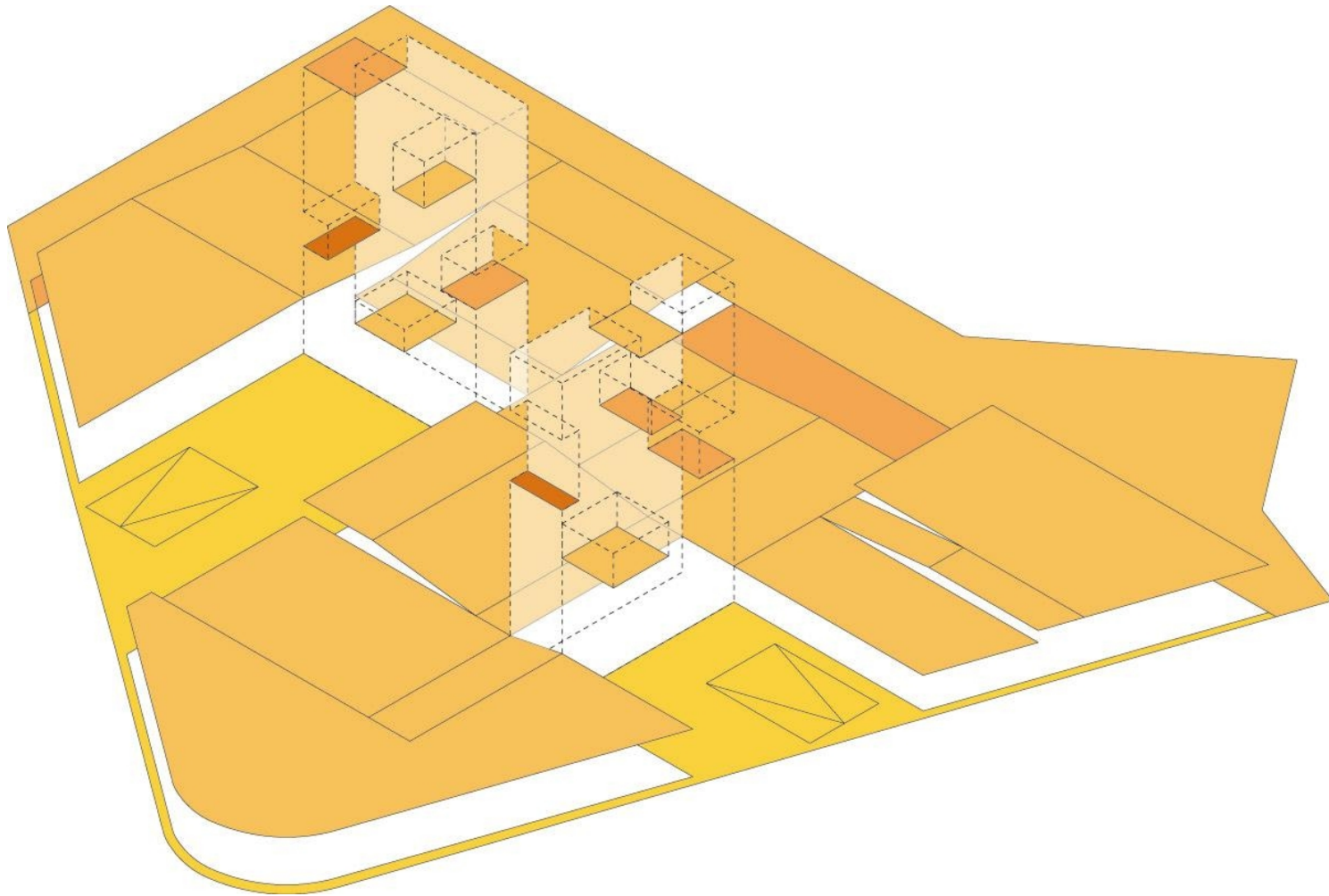




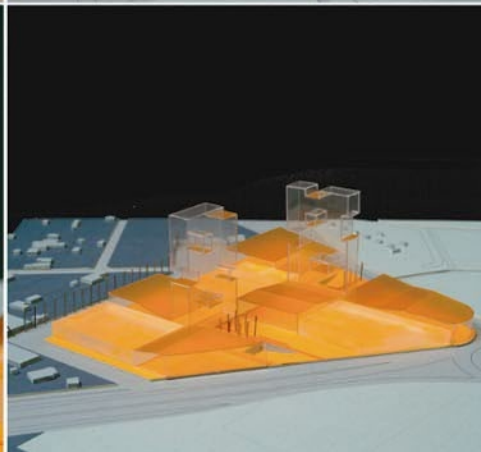
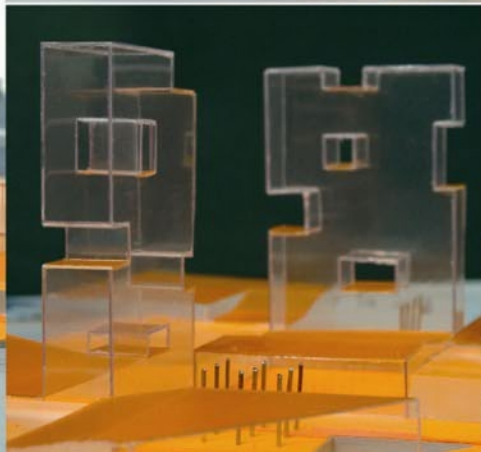
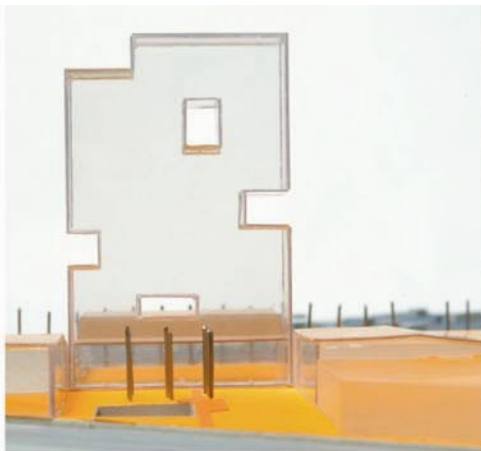
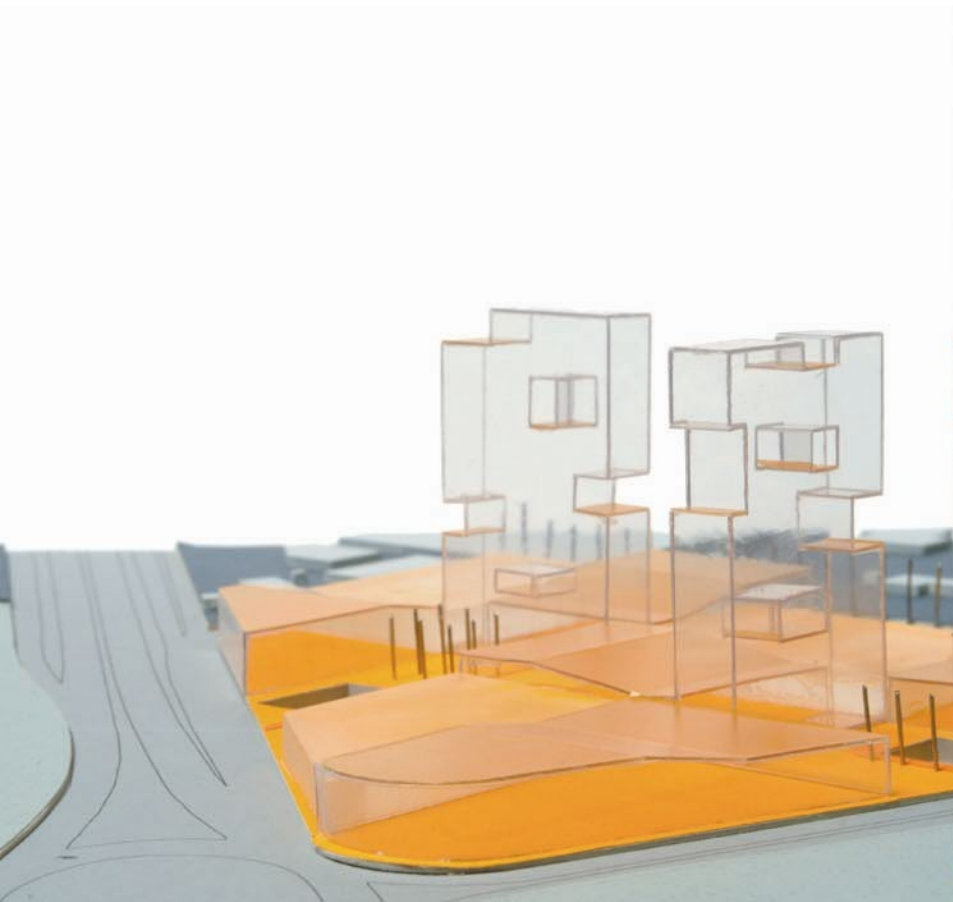
the square



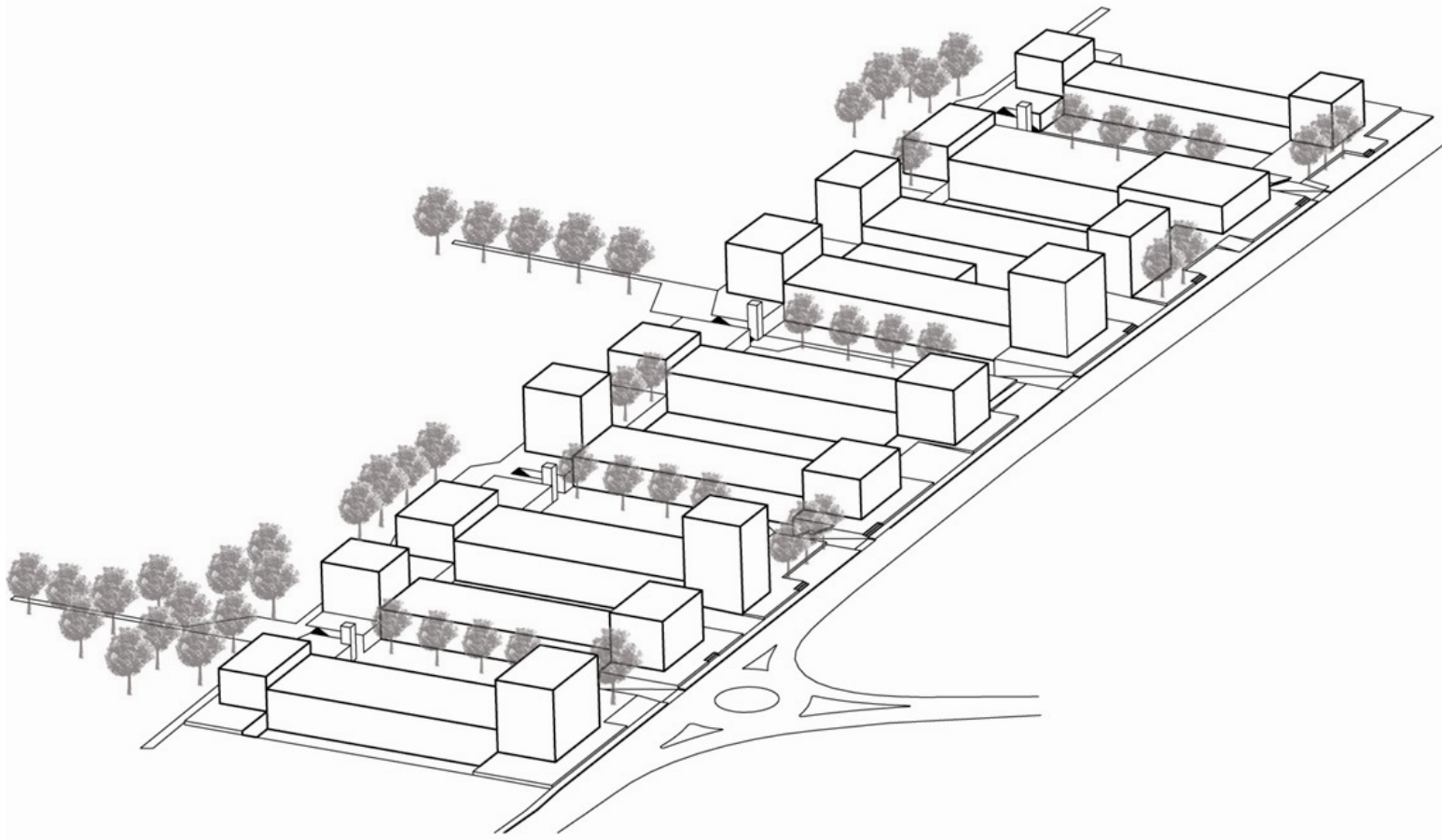
accessibility



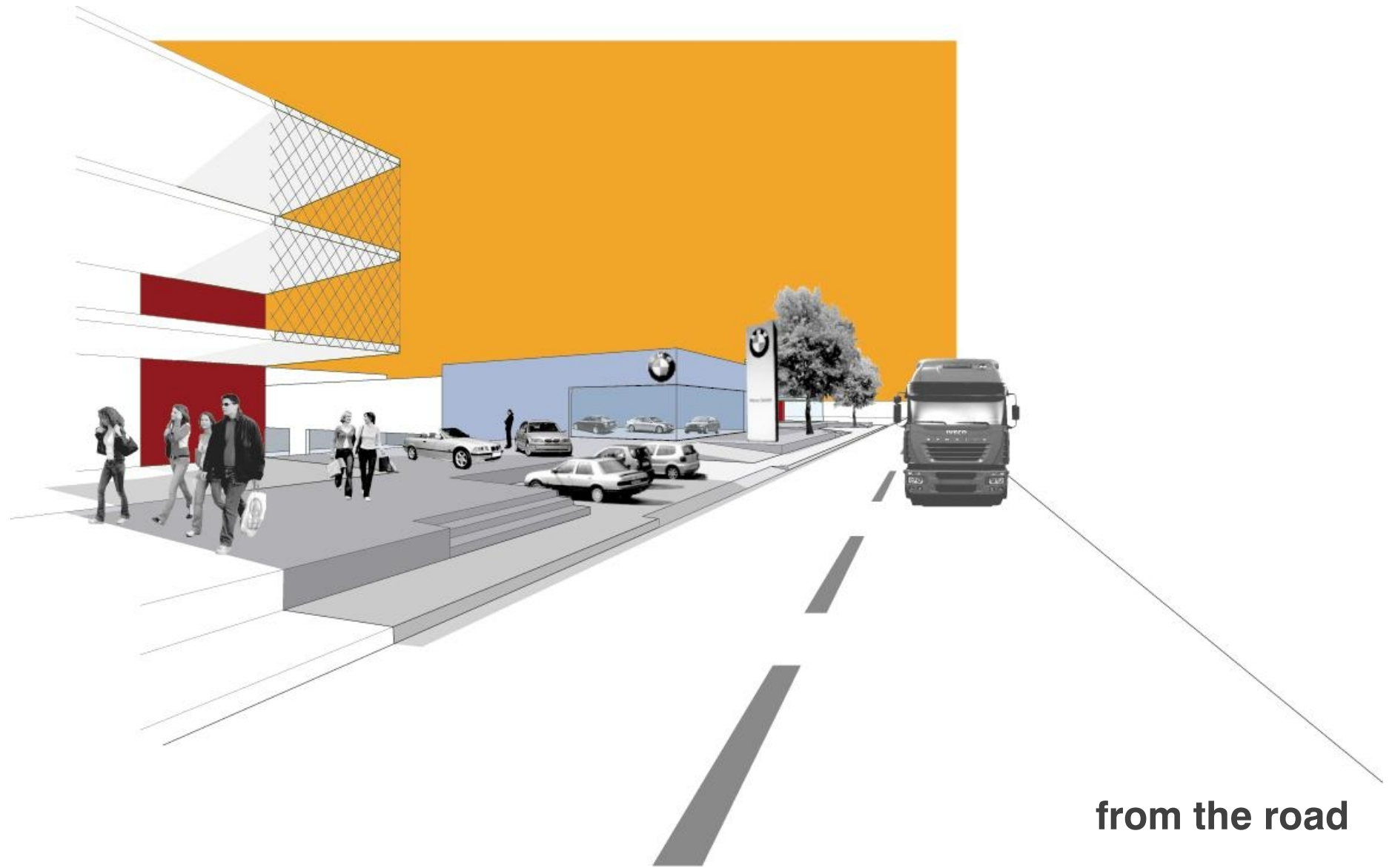
caracter of the open spaces



line #01 giussano



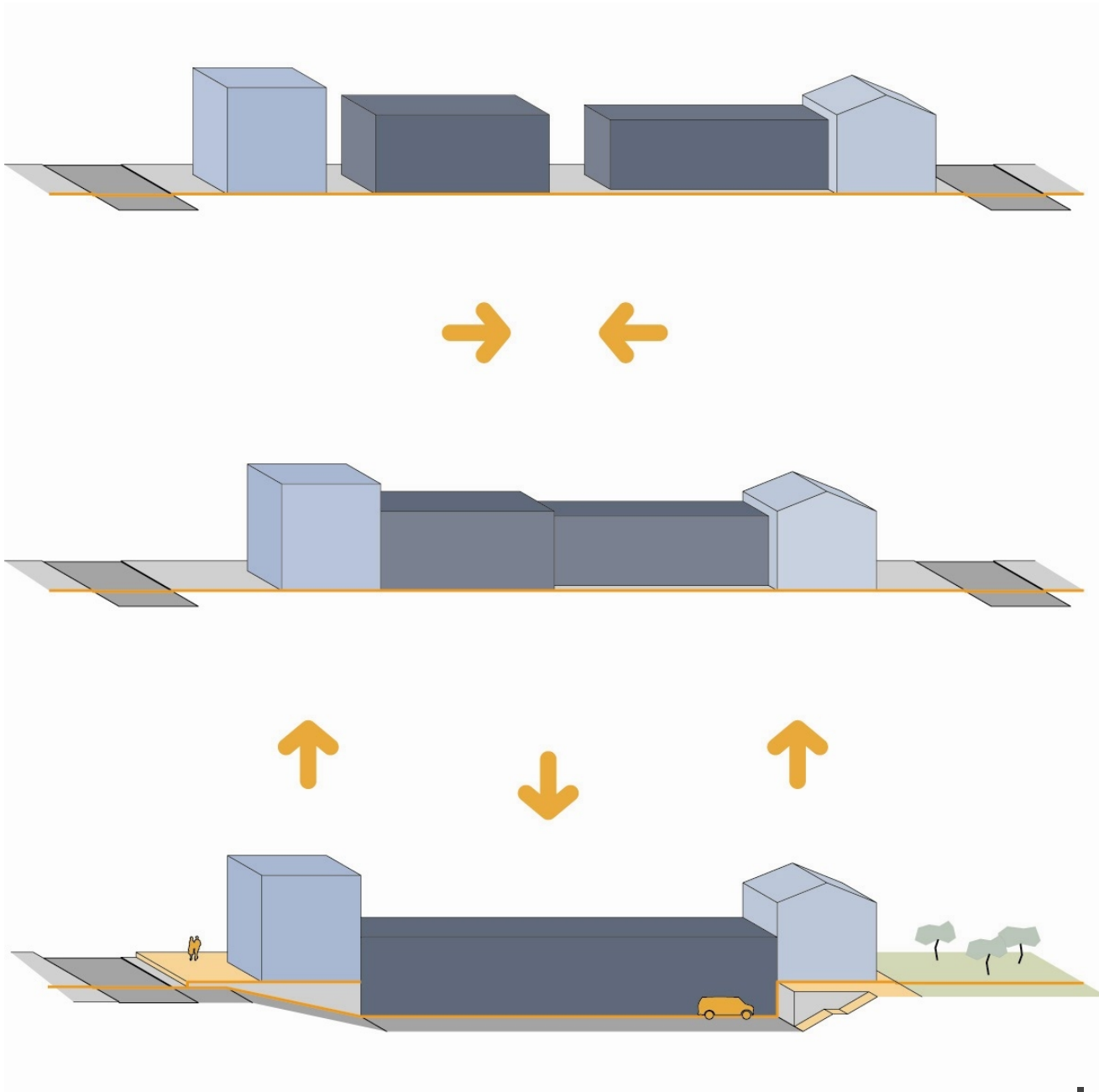




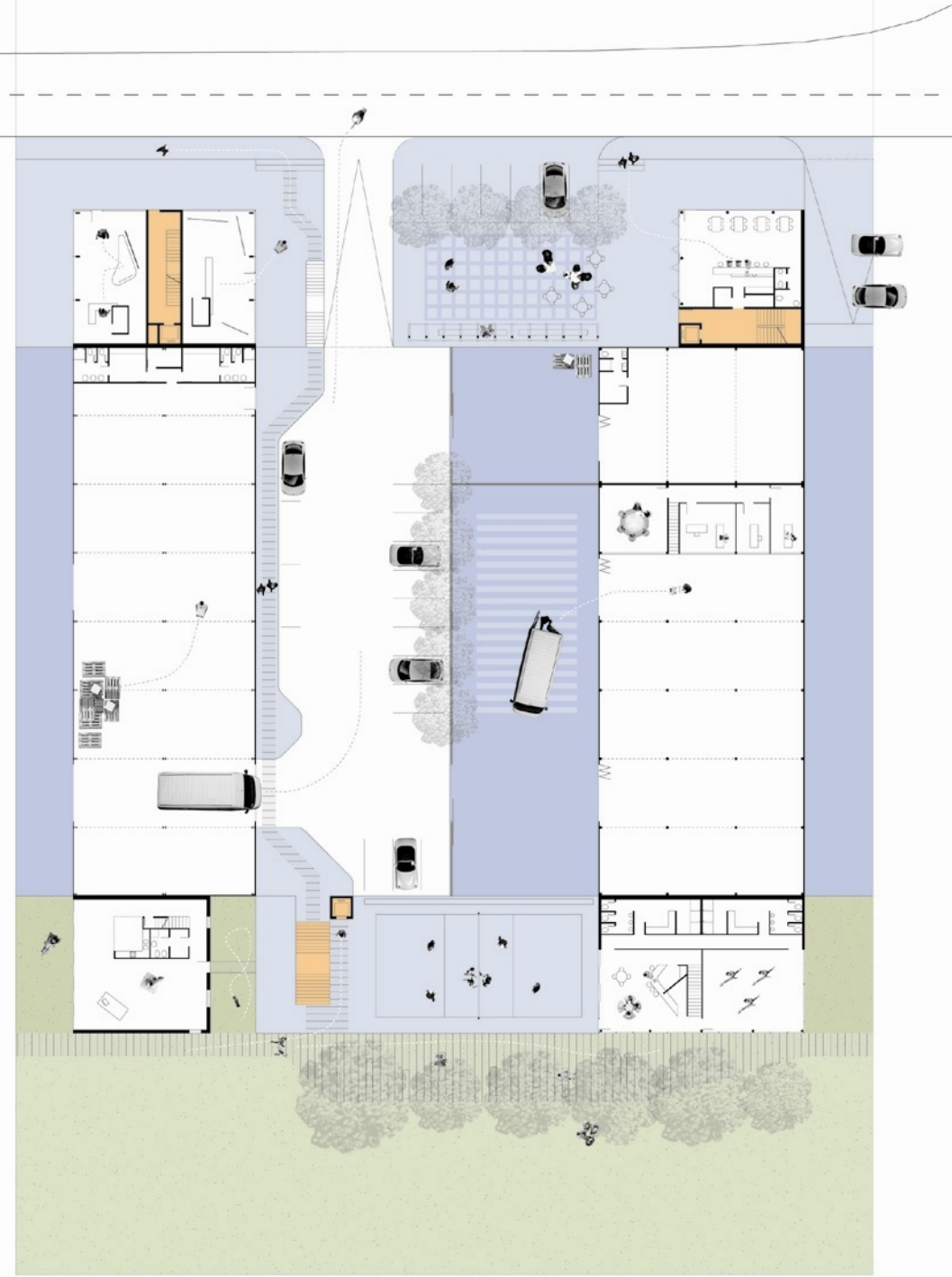
from the road

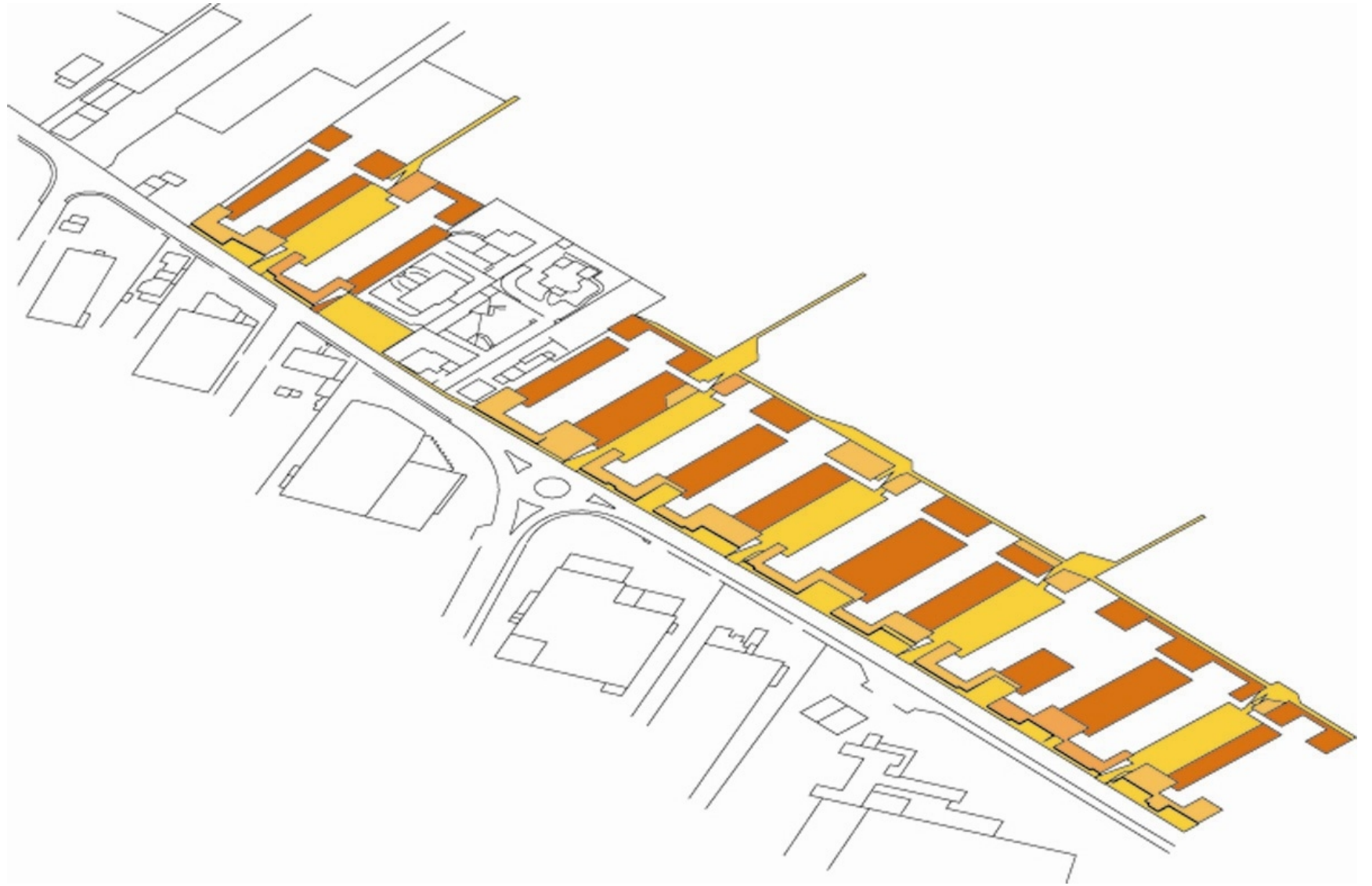


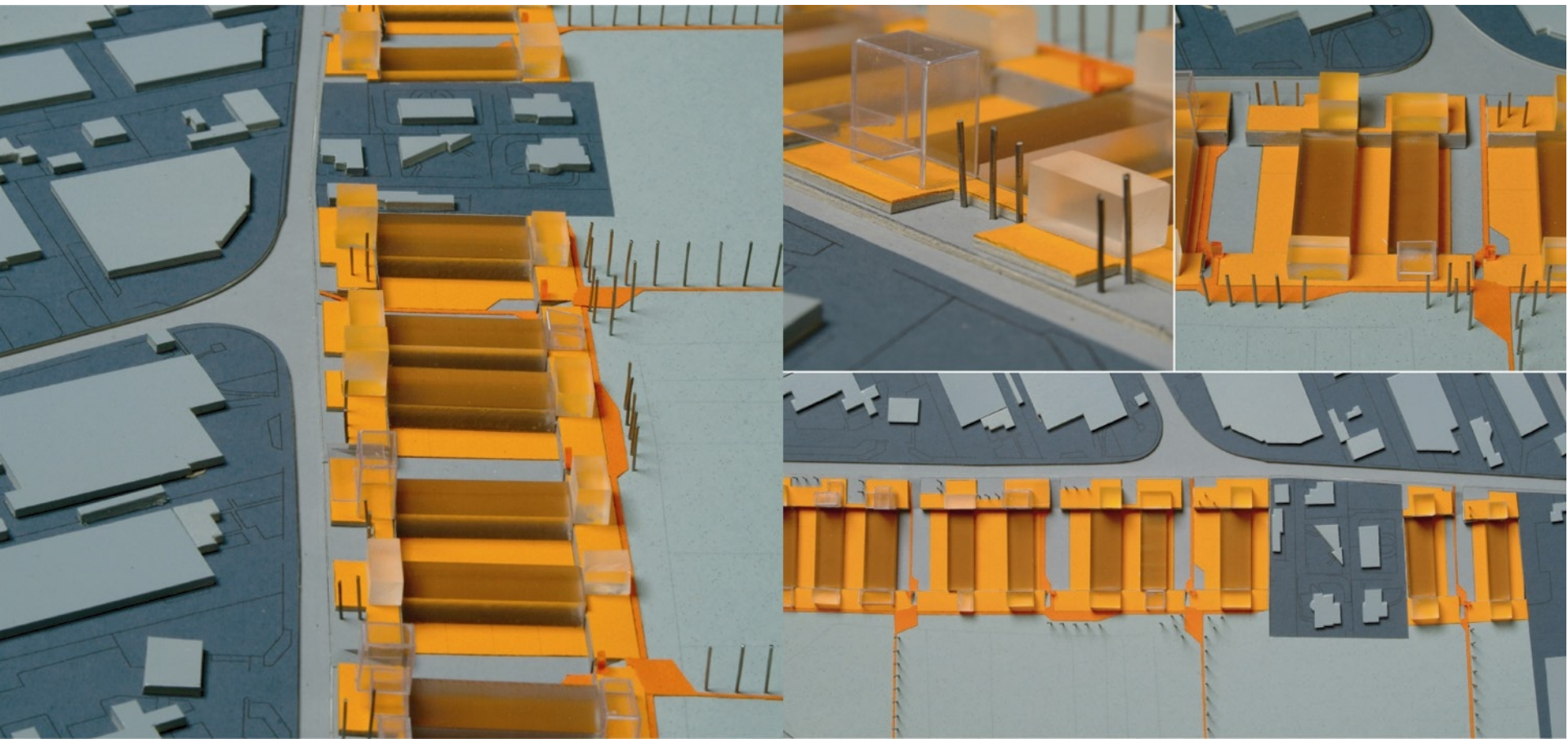
from the fields



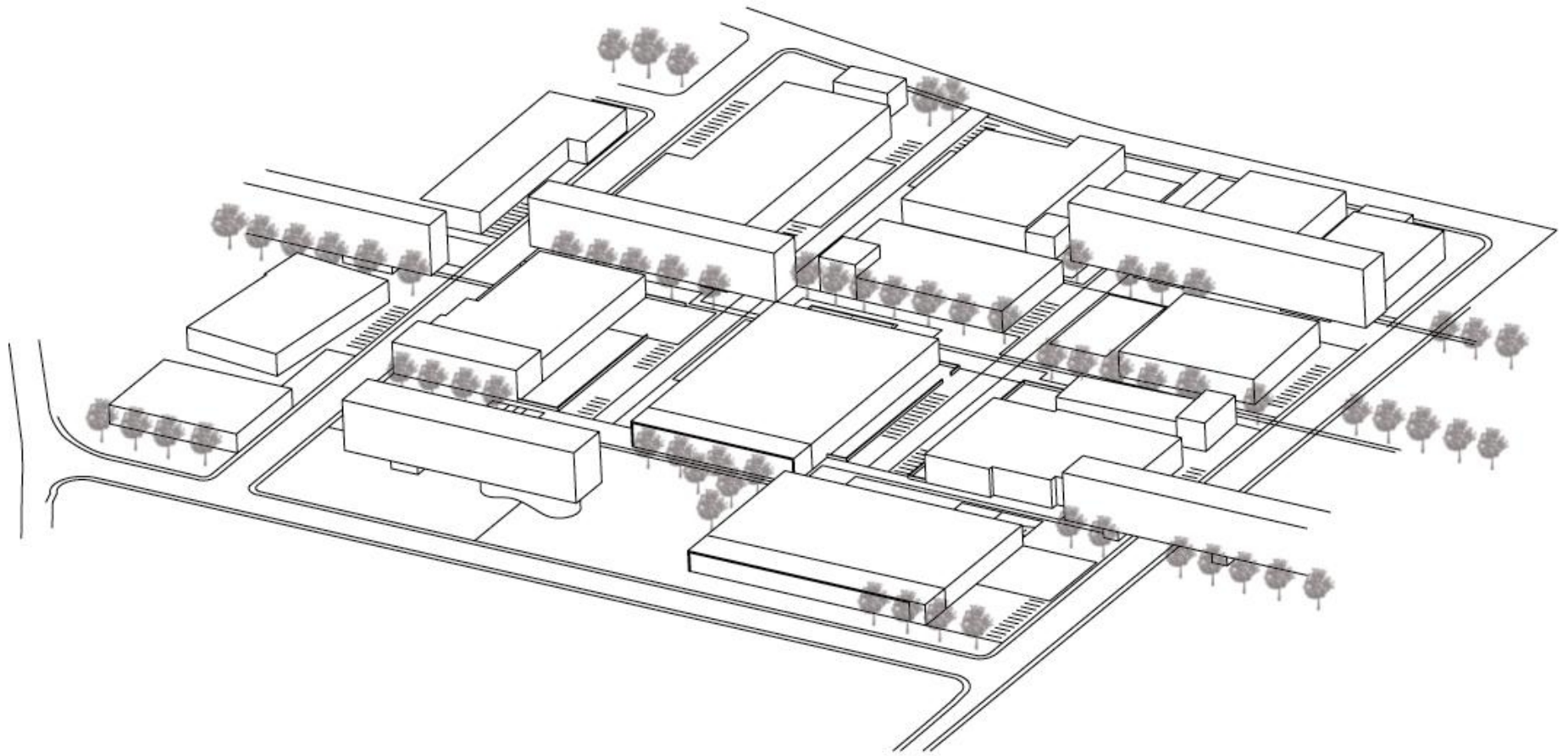
elements and rules

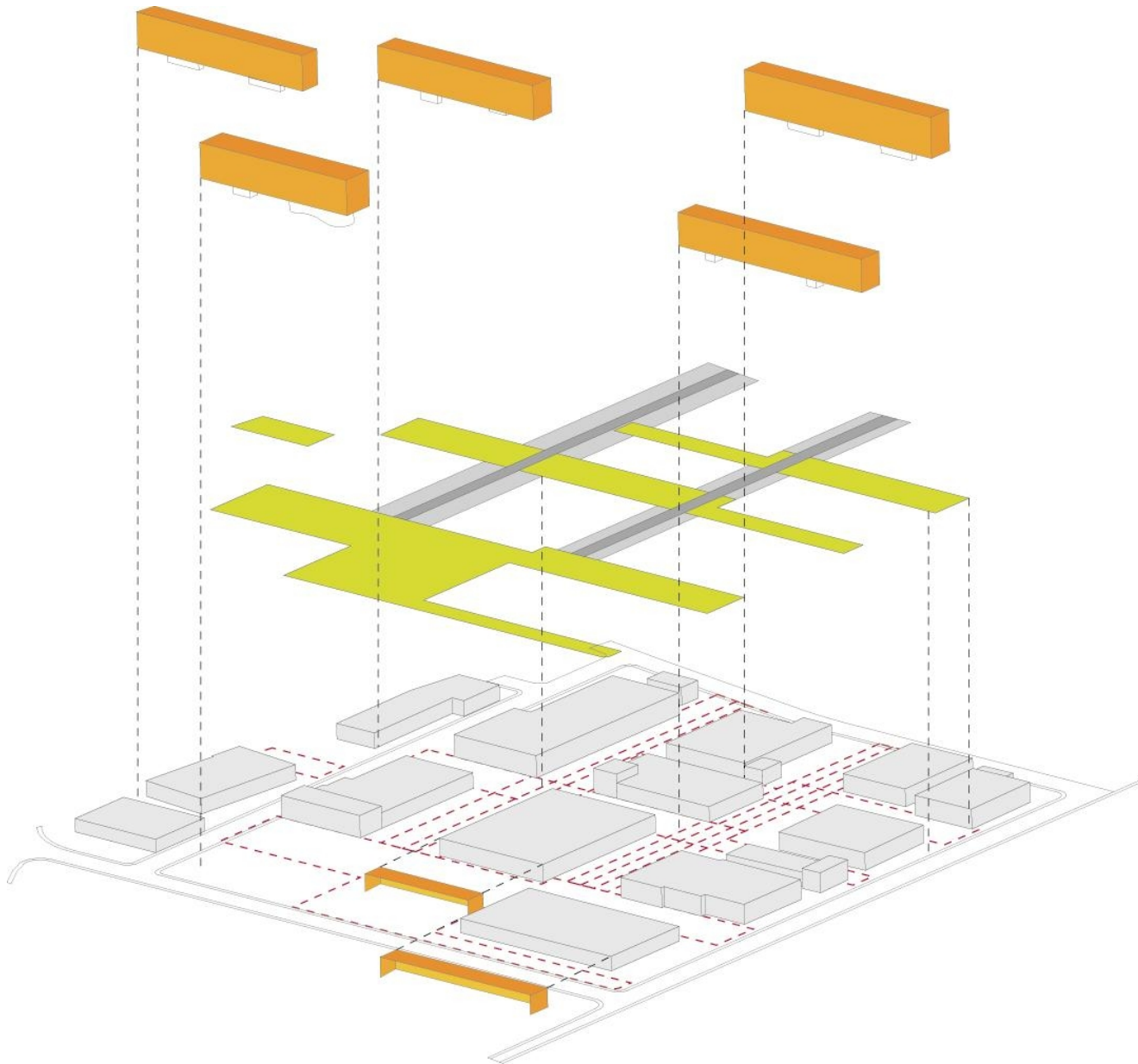






surface #02 seregno





elements and rules

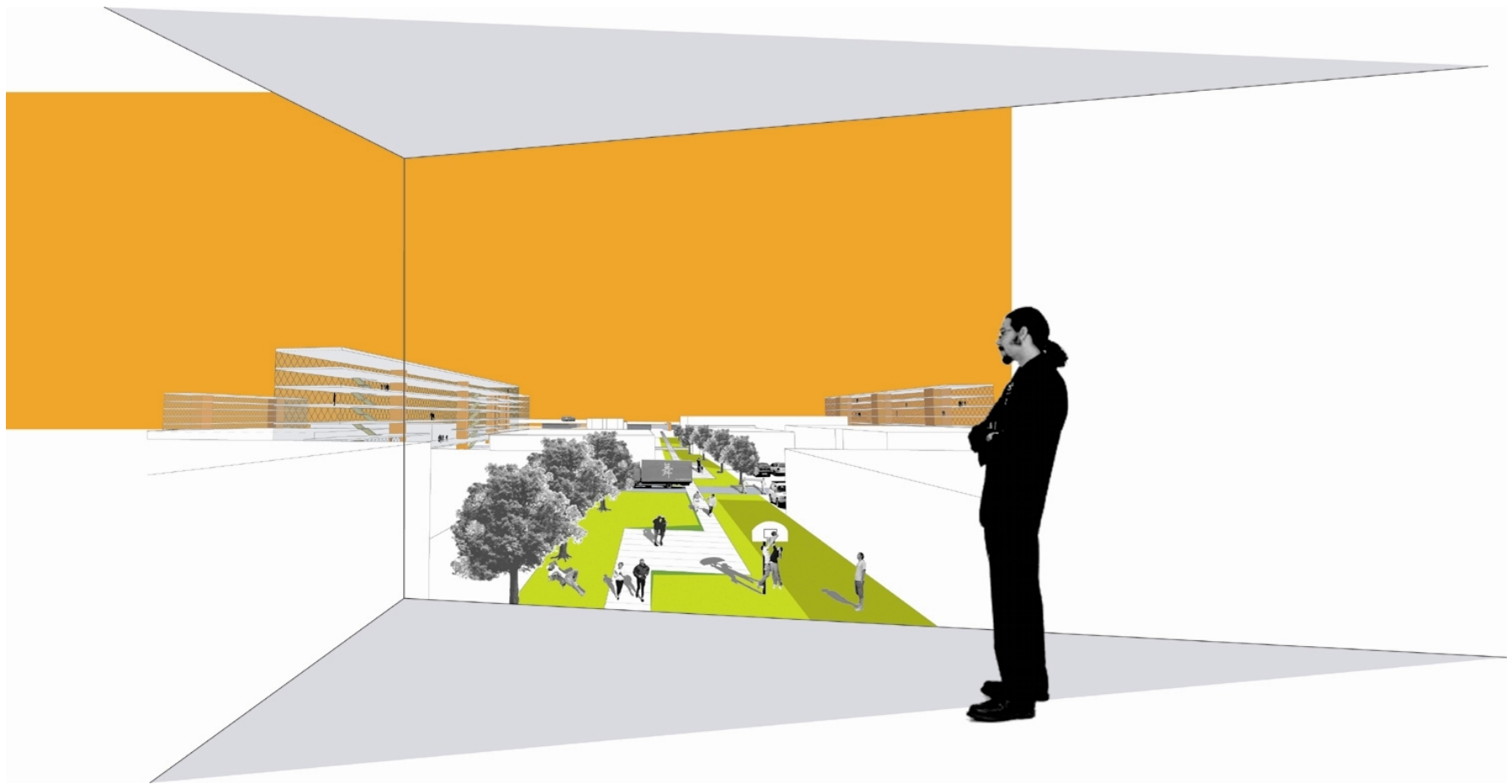




accessibility



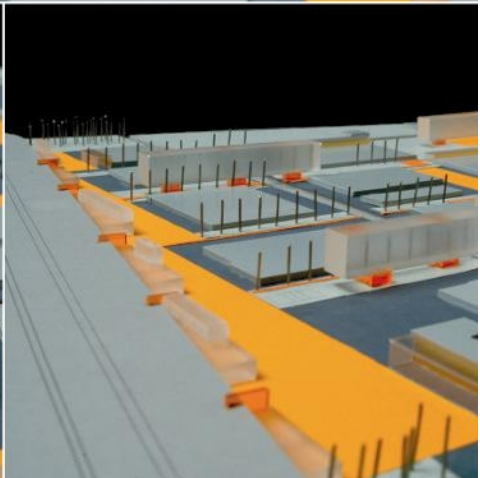
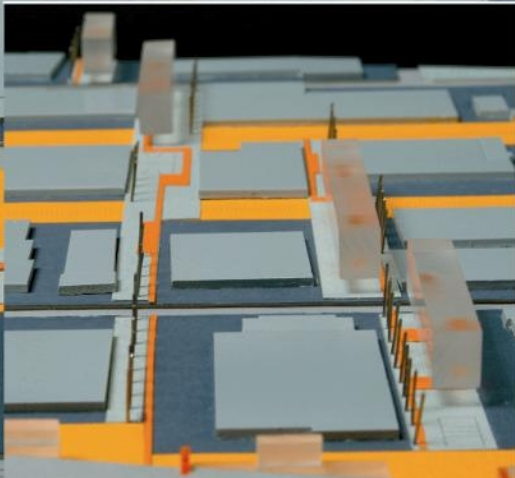
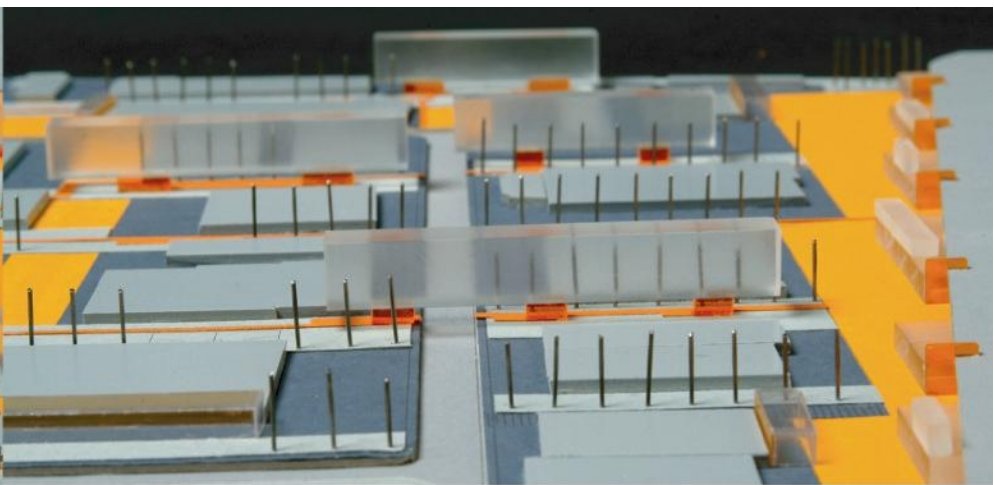
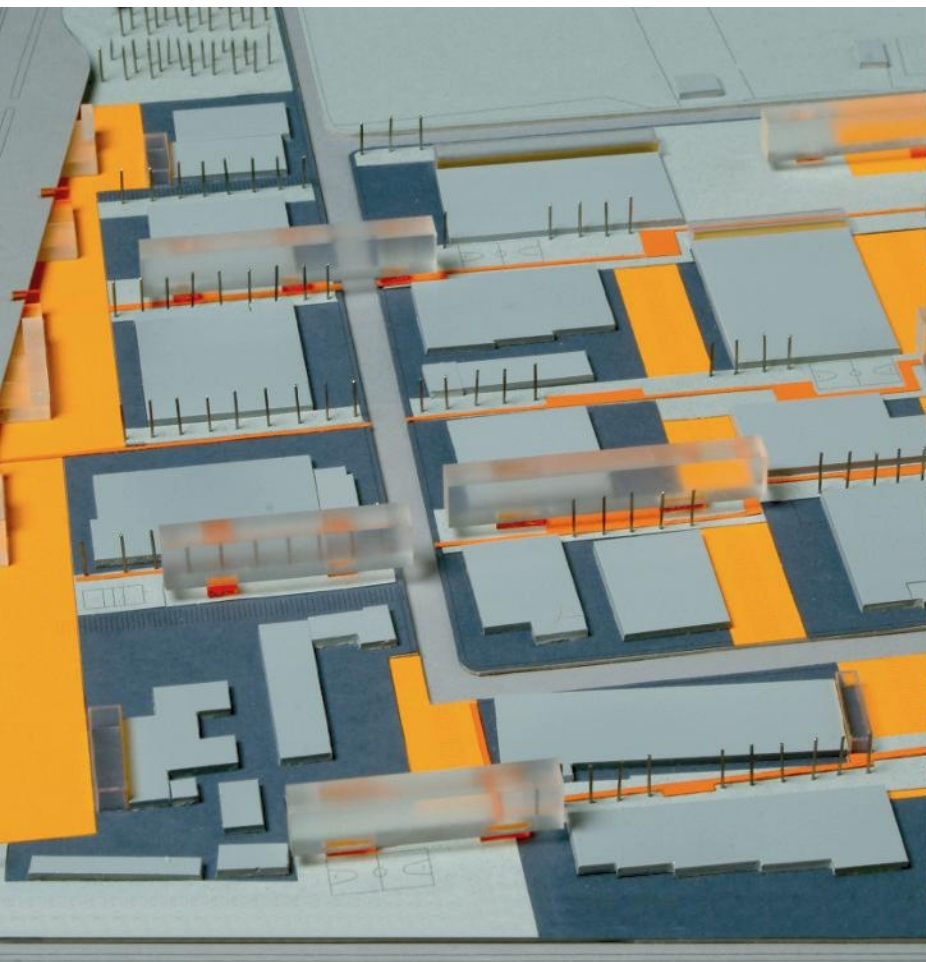
shared surfaces

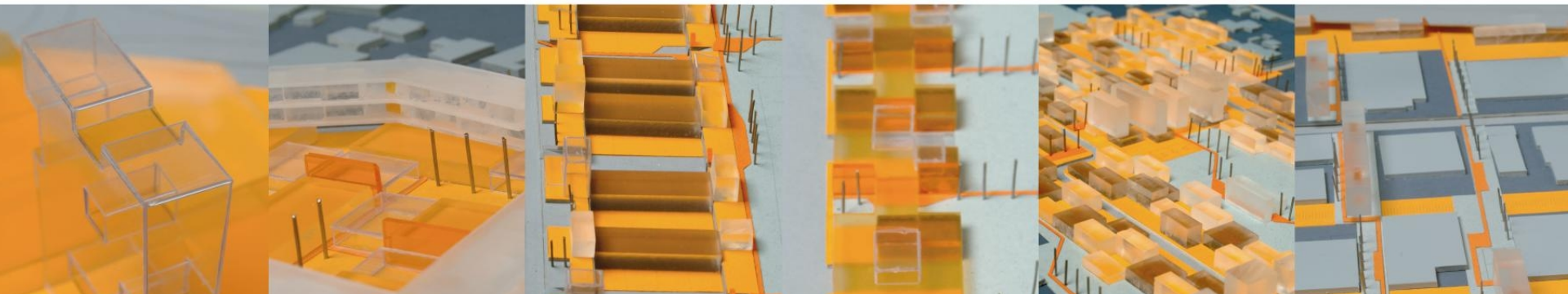


from the office



caracter of the open spaces



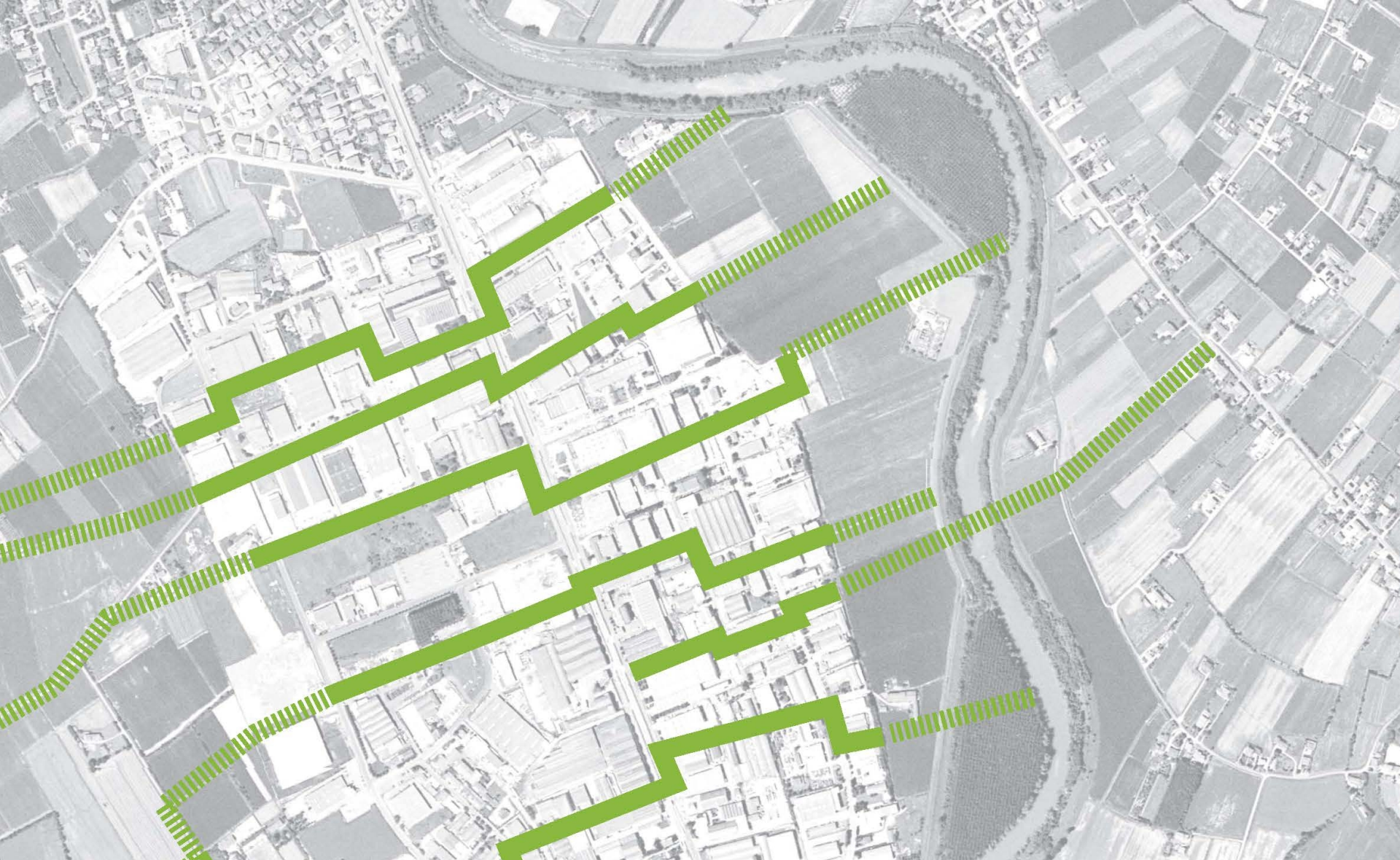




composite strategies

connective section padova

"... green park. parchi in produzione" organized by Chamber of Commerce and Confindustria Padua



SEZIONI CONNETTIVE

un dispositivo per la riorganizzazione sostenibile delle aree produttive

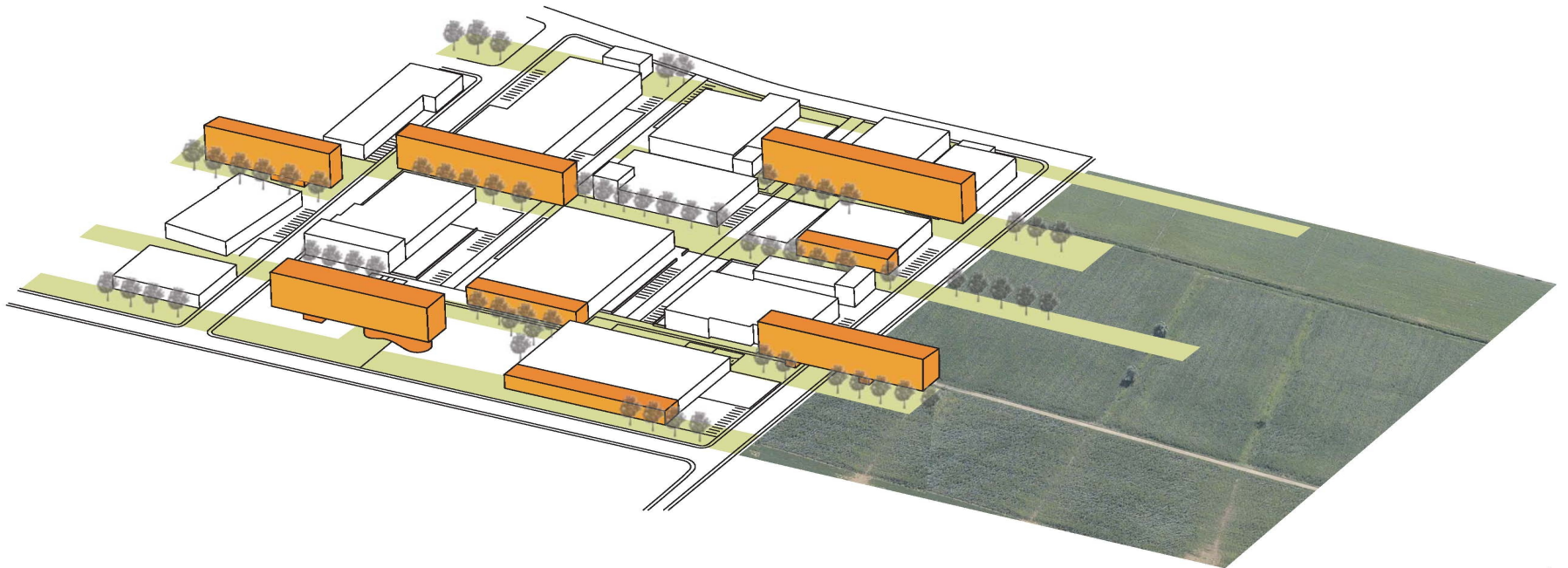


**BAR
APERTO**

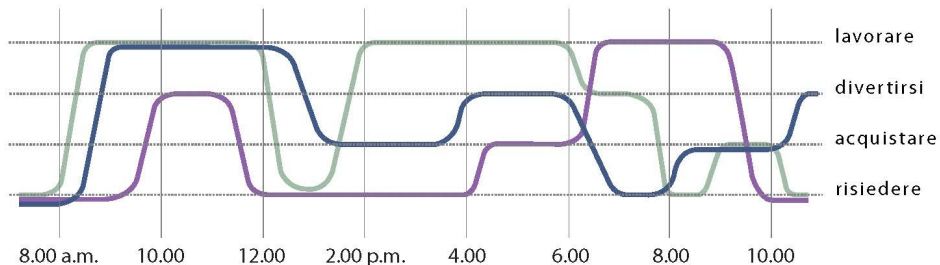
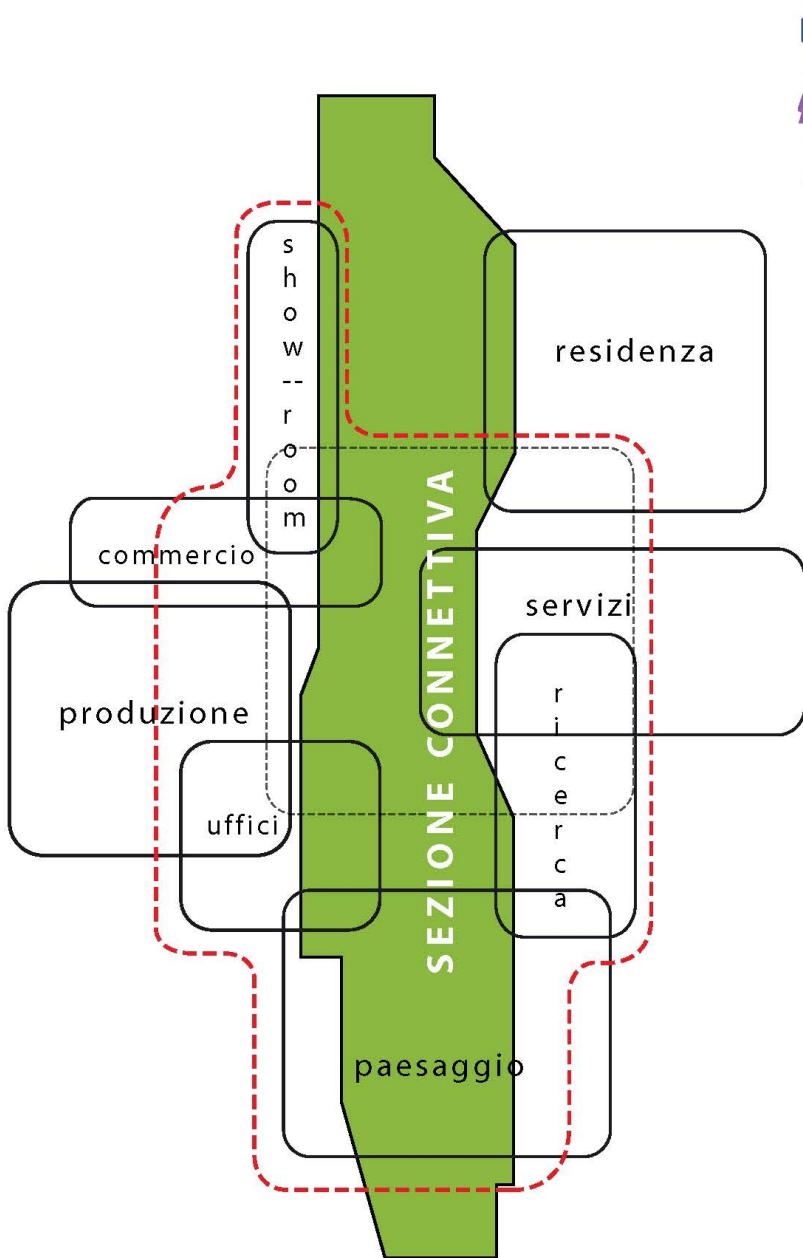
AFFITTA



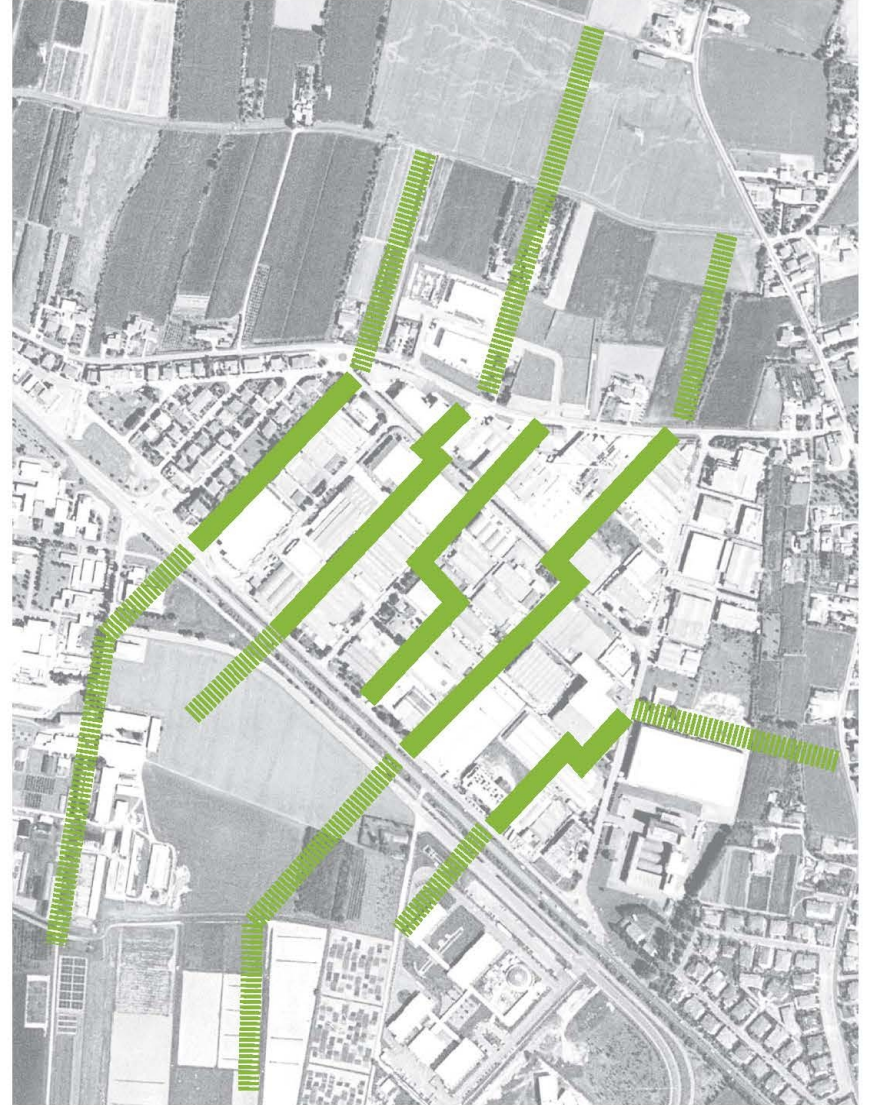
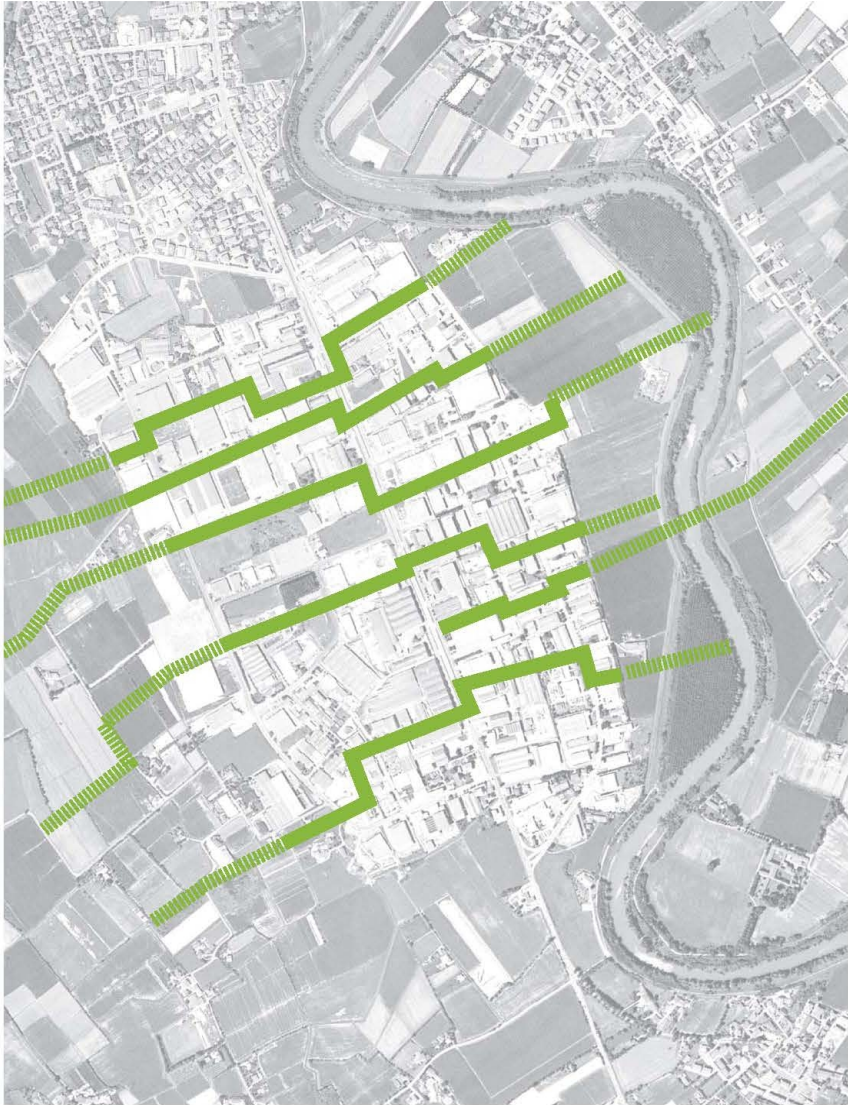
new function and facility
new spaces for leisure
new paths and links
water treatment
ecological corridor



new relationship with the open spaces



time and spaces

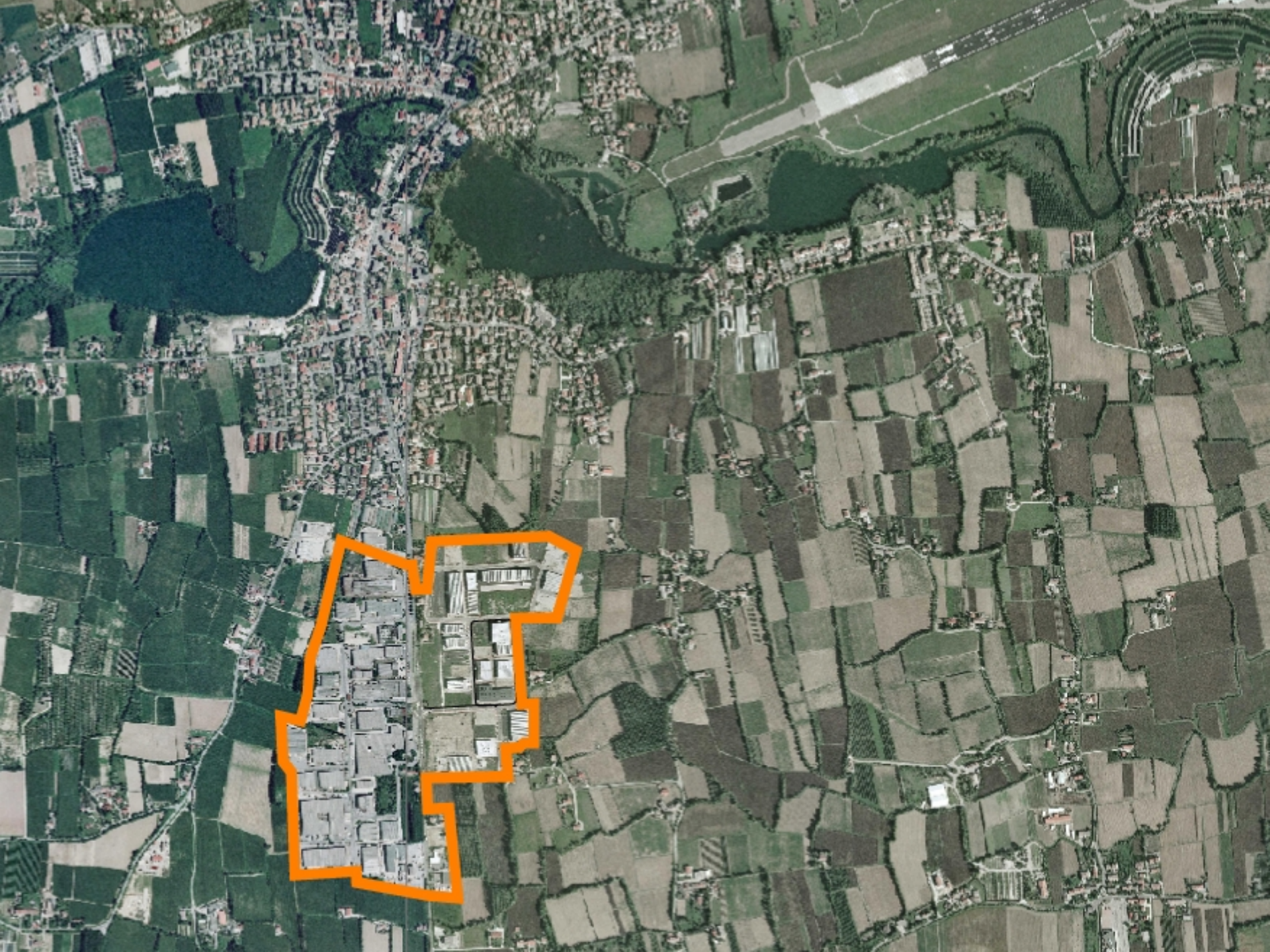


two samples areas in padova



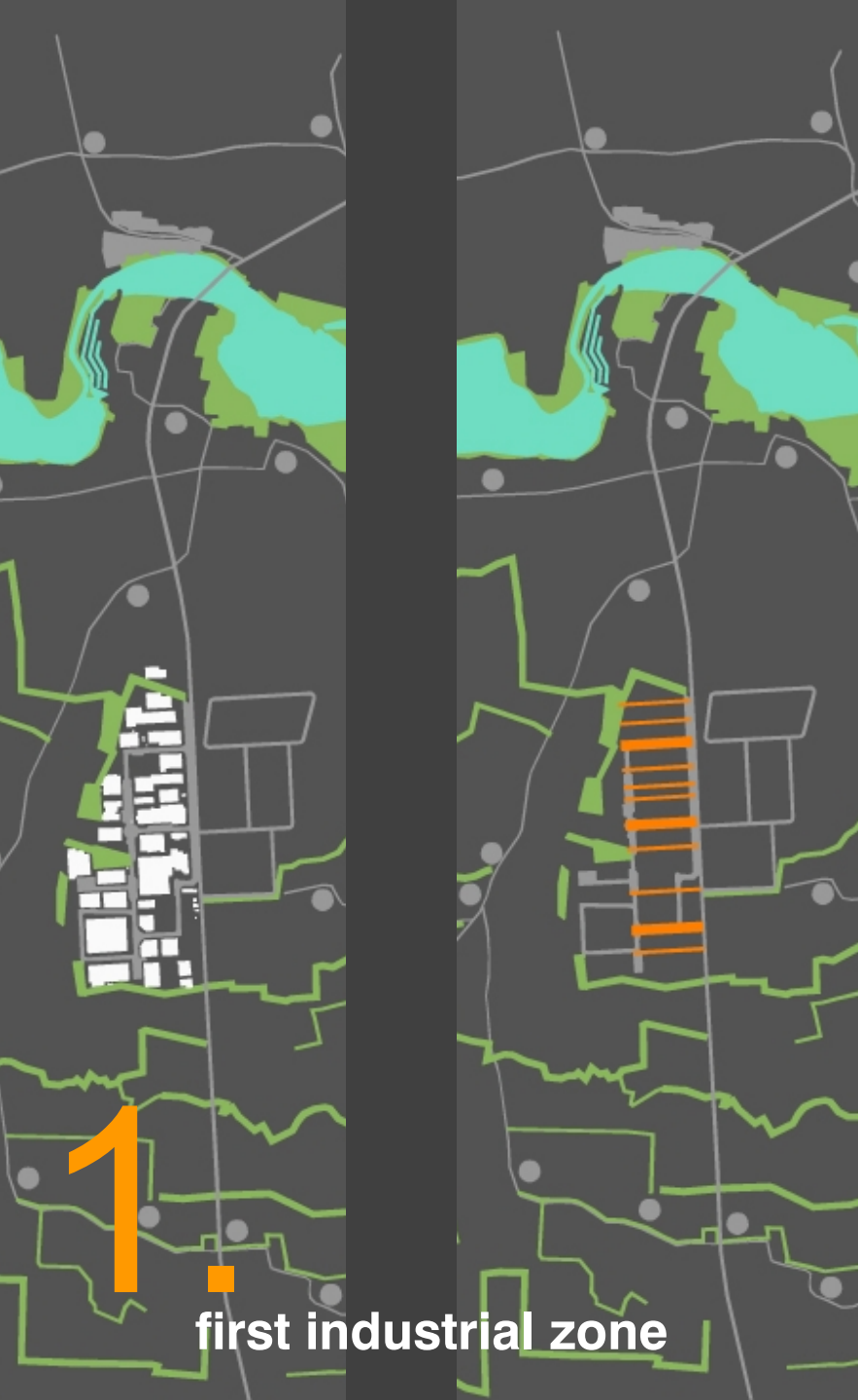
rarefaction

infiltration quinto di treviso



1. situation







agricultural landscape 1968: tree lines



second industrial zone





vittorio veneto

conegliano

oderzo

montebelluna

treviso

castelfranco veneto

quinto

airport

noale-padova

mestre-venezia

2. occupation and opportunities



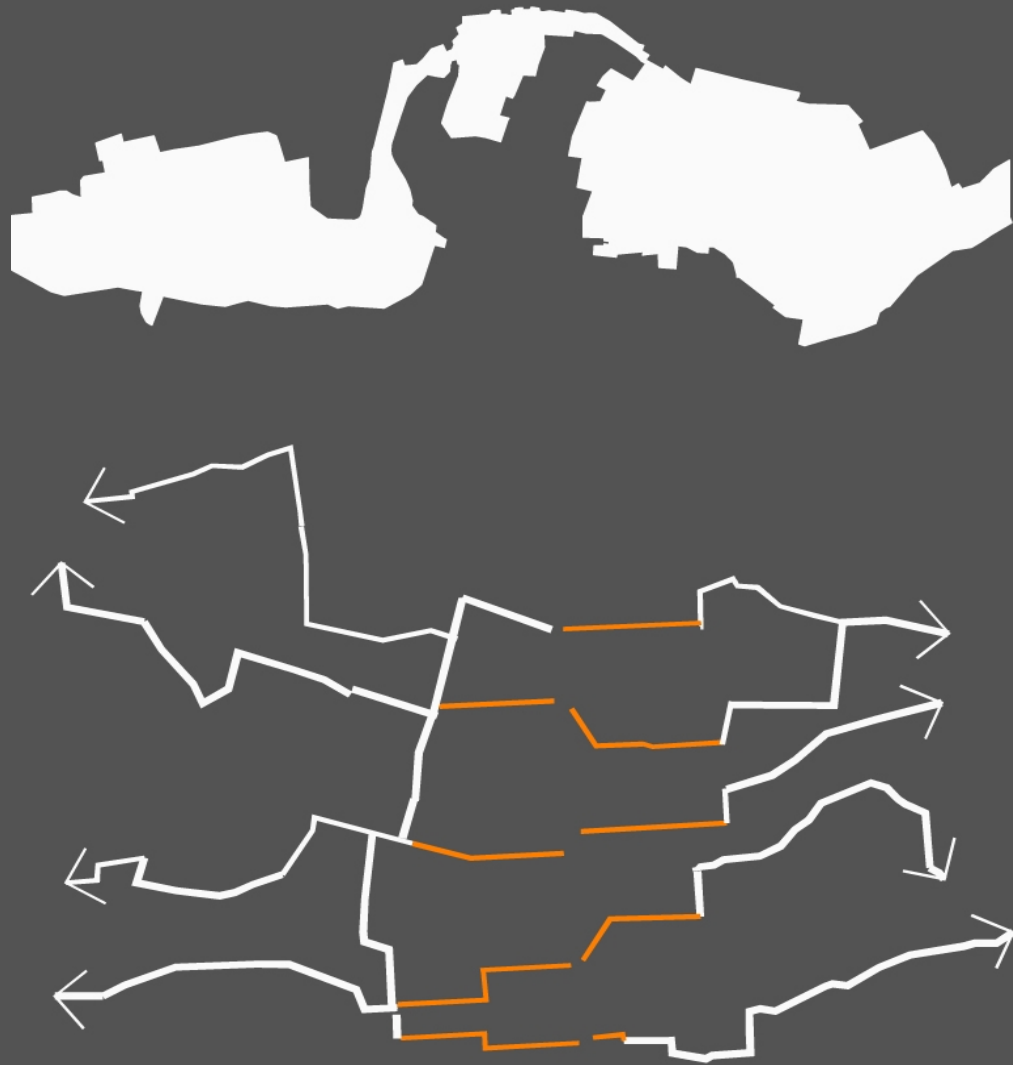
project principles



first fase



circulation



vegetation

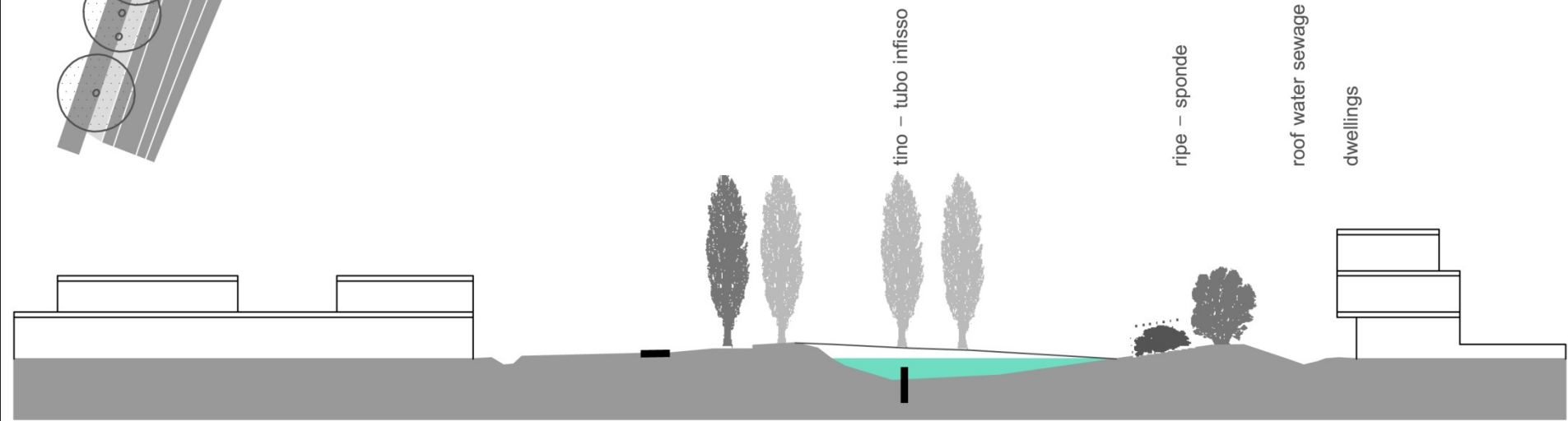
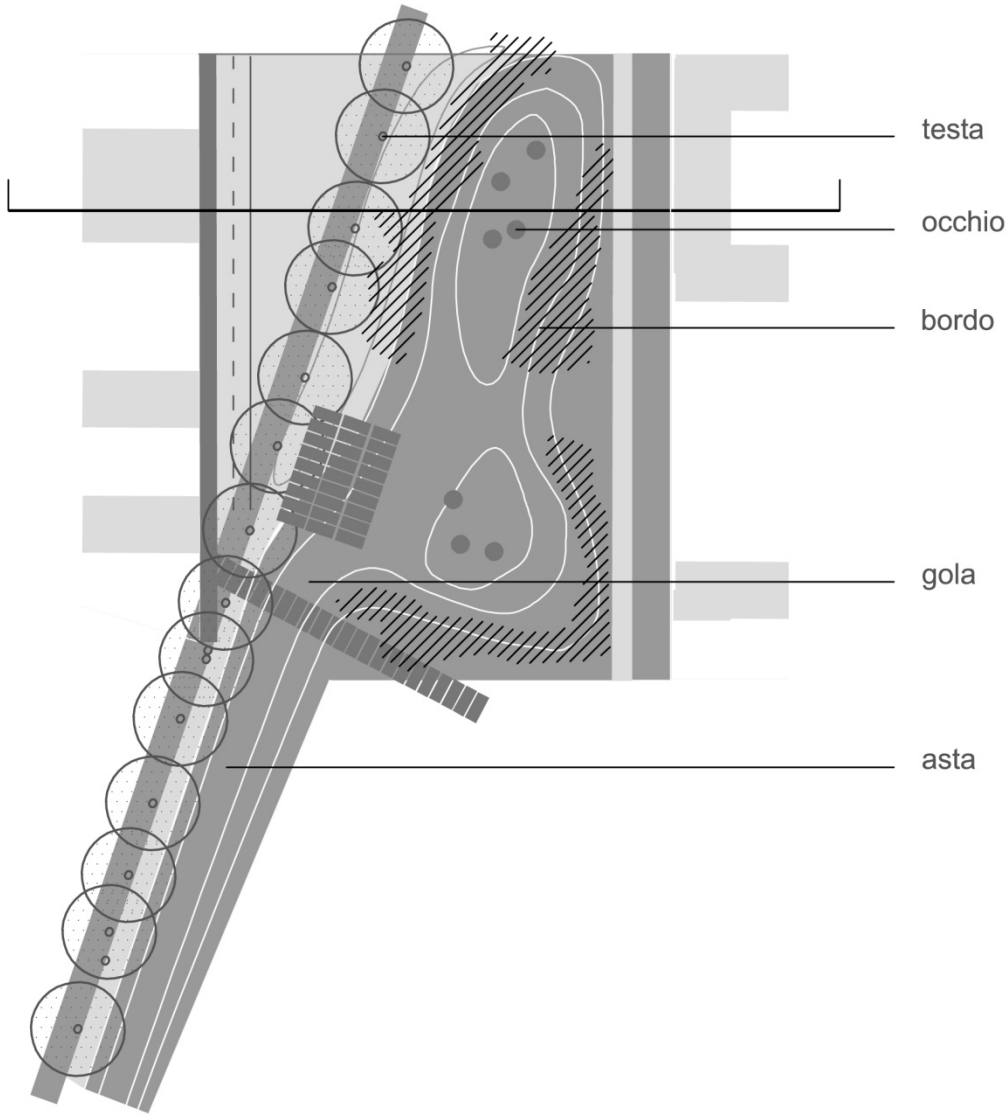


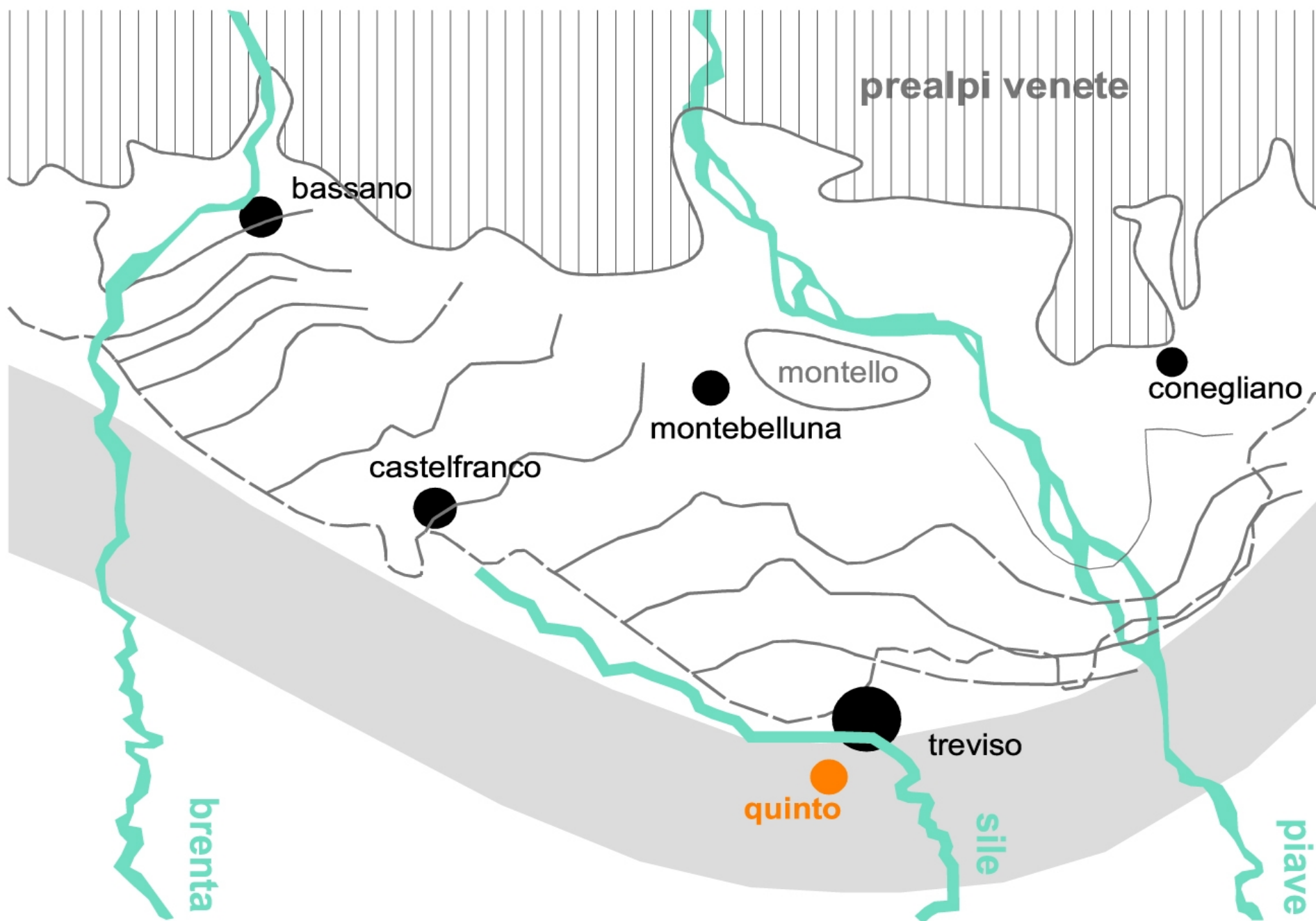


water sewage



strategic spaces migration

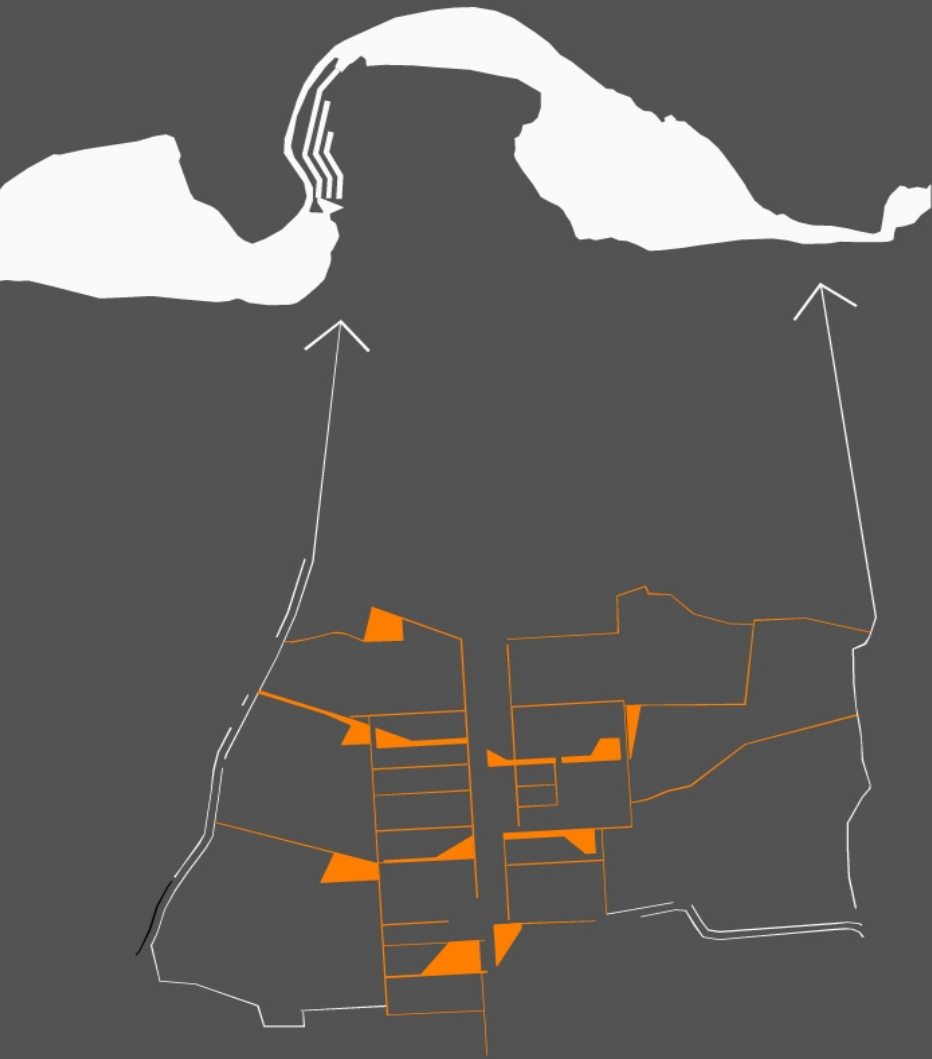




risorgiva line: in the limit between wet and dry landscape



Von Zach map 1801: roads and villas



water sewage



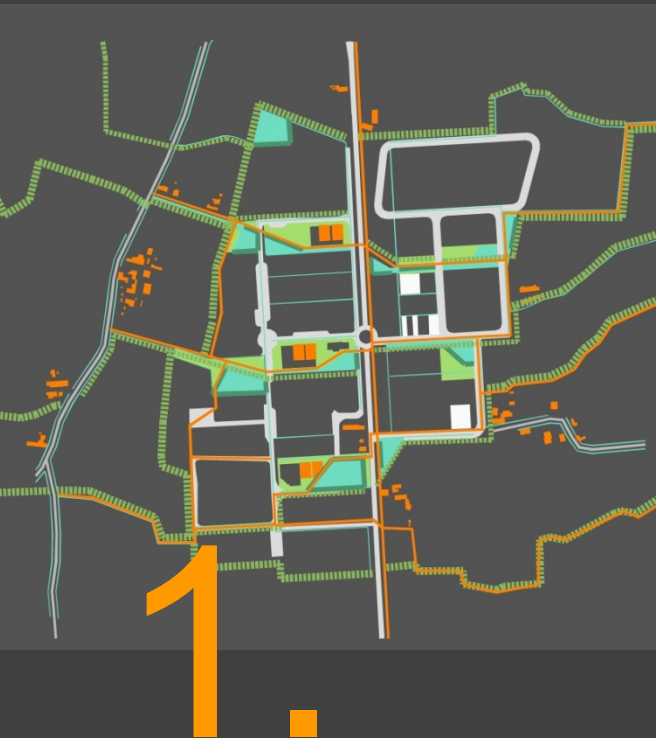
strategic spaces migration



first phase: infrastructure + water sewage + trees + strategic spaces

4. scenarios and phasage

first phase



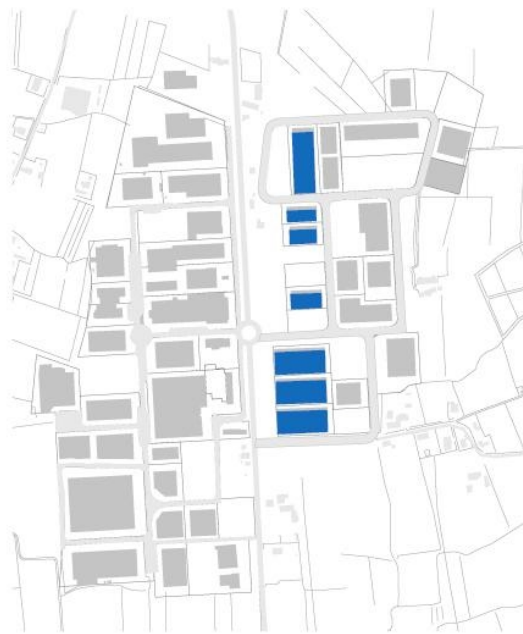
scenario 1



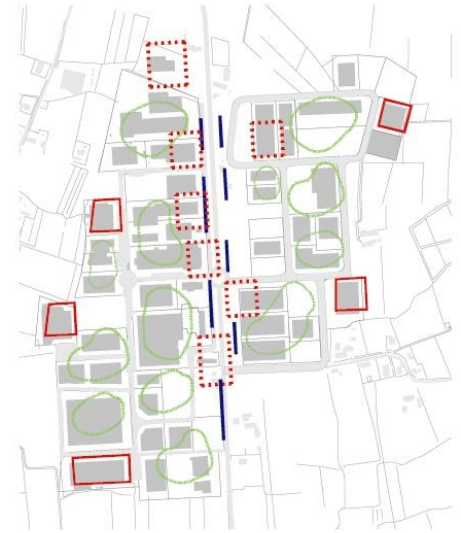


INTENSITY OF USE

- High
- Medium
- Low



FLEXIBLE BUILDINGS



SITE POTENTIALS

- Nodes
- Edge
- Infill
- View



first phase



2.



scenario 2

first phase



3.



scenario 3

to open : overcoming the border, the fence of the plots

to intensify: creating new opportunities to introduce the coexistence of functions and inhabitants, pay attention that not all it's possible everywhere

to hybridize: drawing spaces open to different interpretation and uses

to connect: re-articulate the relations between the fragmented parts in a district and between these and the urban context

keywords



Productive settlements

Roberto Manuelli
roberto@guarchitetti.it

Gianfranco Orsenigo
gianfranco@guarchitetti.it